

archmodels vol. 271

Archmodels vol. 271 Our 3D model collection features 80 high-quality skyscrapers each in both daytime and nighttime versions. These meticulously crafted models are designed to enhance the realism of any urban scene, whether it's for architectural visualization, city planning, or game development. Each model is accurately detailed, with precise dimensions and textures, making them ideal for close-up shots or panoramic views.

FEATURES

SETS:	80
COMPATIBILITY:	3ds Max 2019 and higher, Cinema 4D R21,
RENDERERS:	V-Ray 6, Cycles, Corona 9, Vray4C4D 6.0, Octane for Blender 3.2
FORMATS:	*.max, *.obj, *.fbx, *.c4d, *.blend, *.usd



archmodels vol. 271



archmodels vol. 271



archmodels vol. 271



archmodels vol. 271



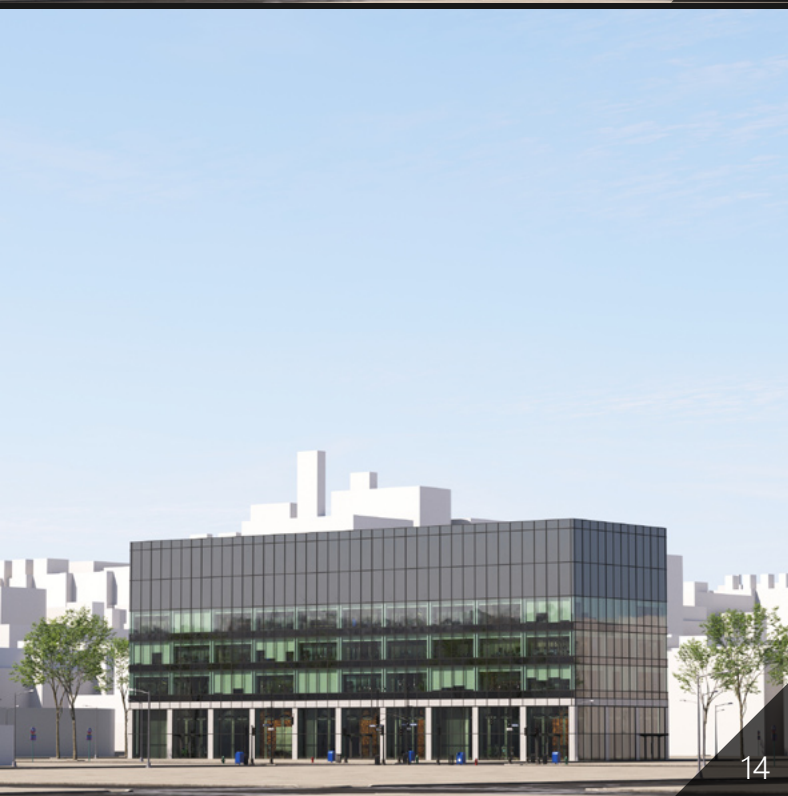
archmodels vol. 271



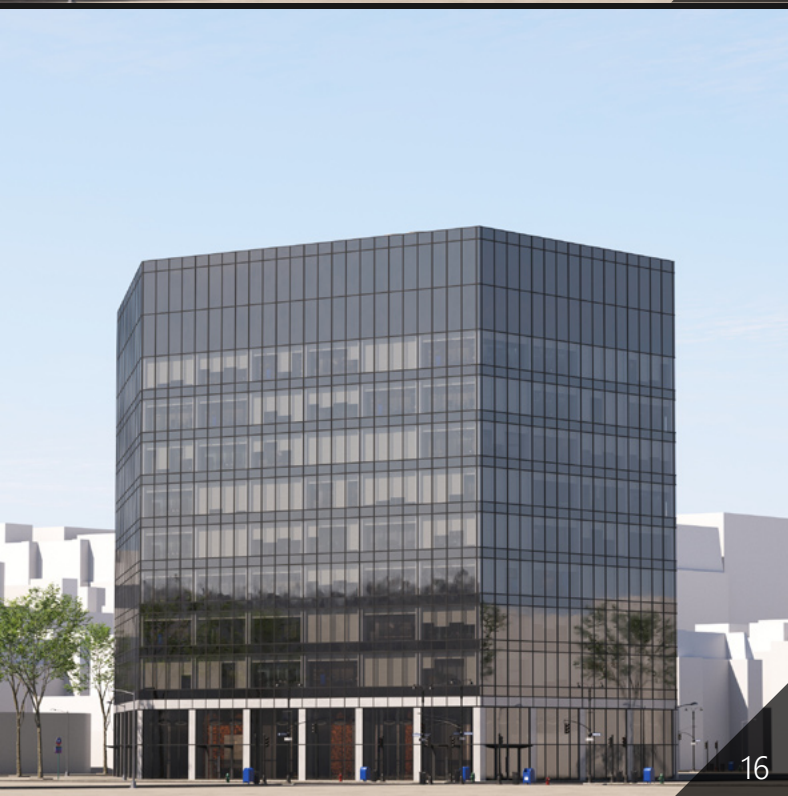
archmodels vol. 271



archmodels vol. 271



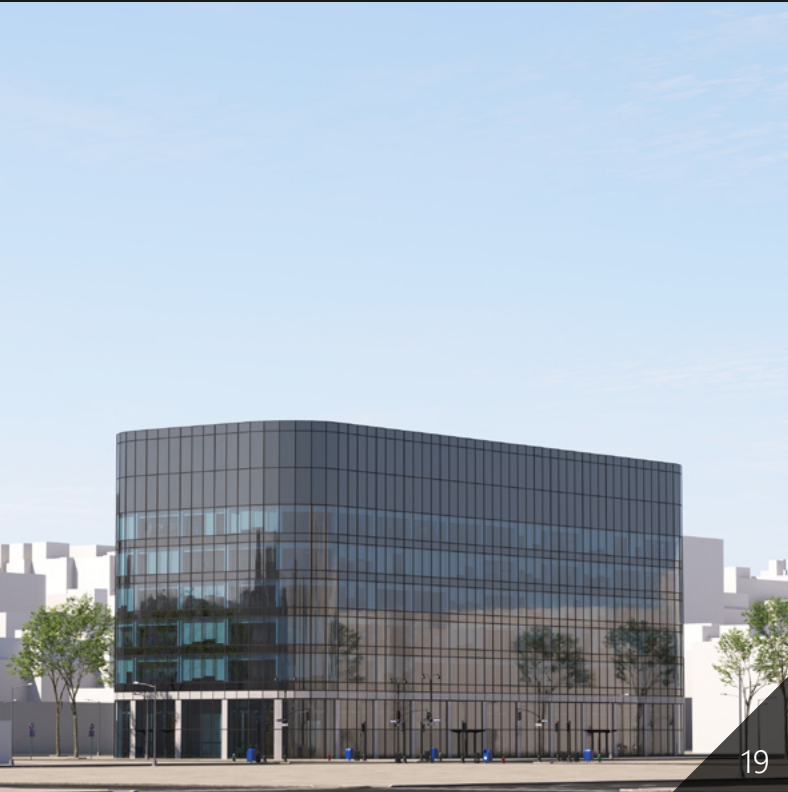
archmodels vol. 271



archmodels vol. 271



archmodels vol. 271



archmodels vol. 271



archmodels vol. 271



archmodels vol. 271



archmodels vol. 271



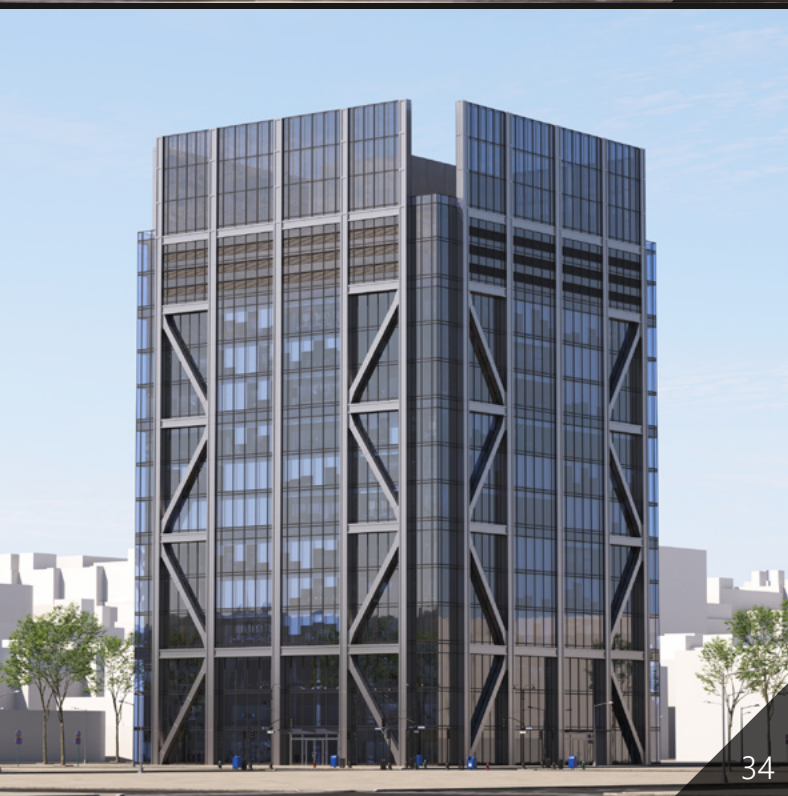
archmodels vol. 271



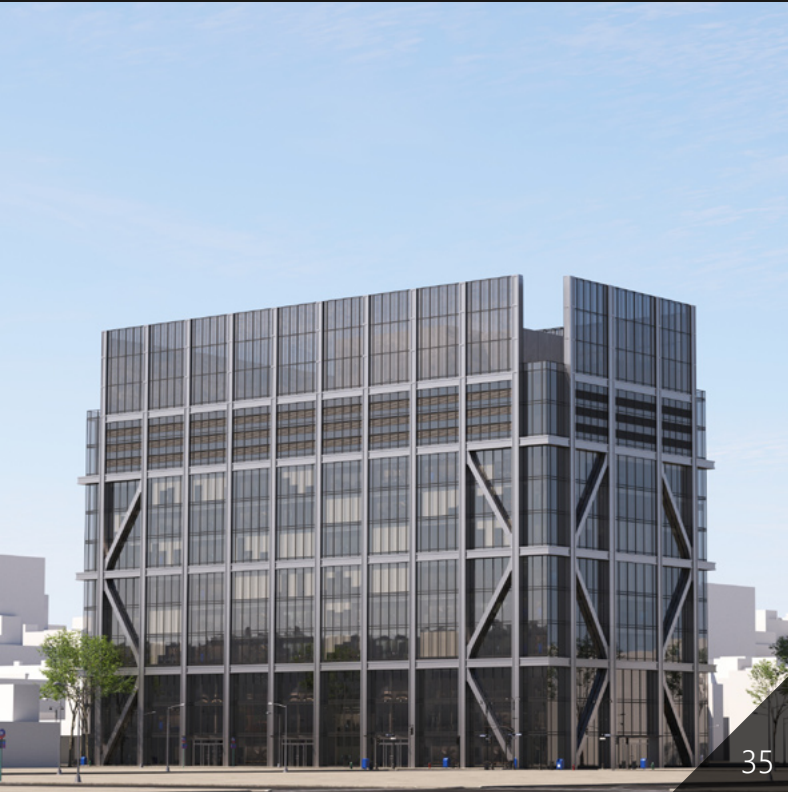
archmodels vol. 271



archmodels vol. 271



archmodels vol. 271



archmodels vol. 271



archmodels vol. 271



archmodels vol. 271



archmodels vol. 271



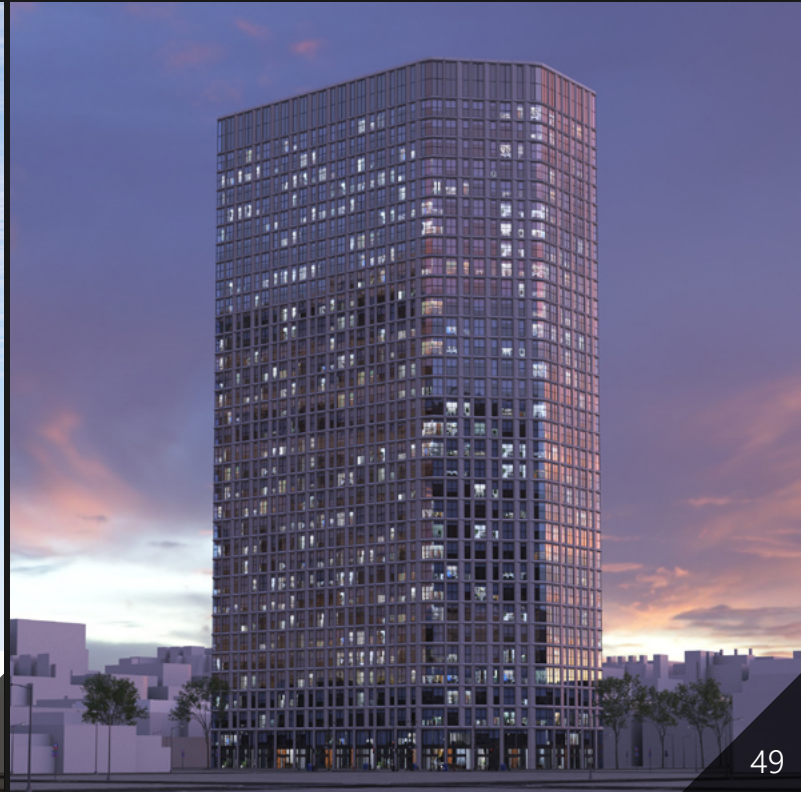
archmodels vol. 271



archmodels vol. 271



archmodels vol. 271



archmodels vol. 271



archmodels vol. 271



archmodels vol. 271



archmodels vol. 271



archmodels vol. 271



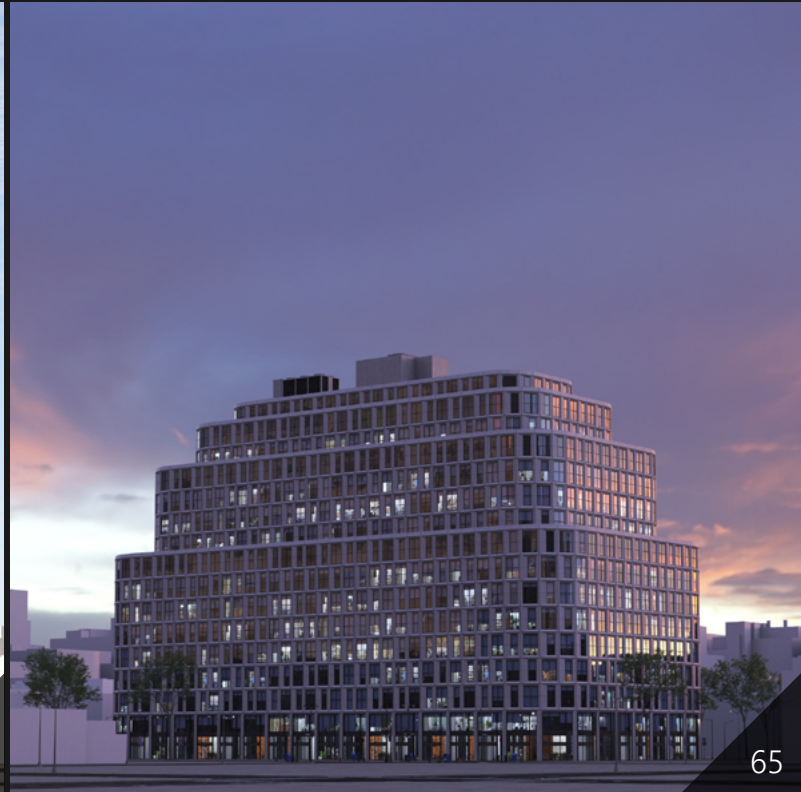
archmodels vol. 271



archmodels vol. 271



archmodels vol. 271



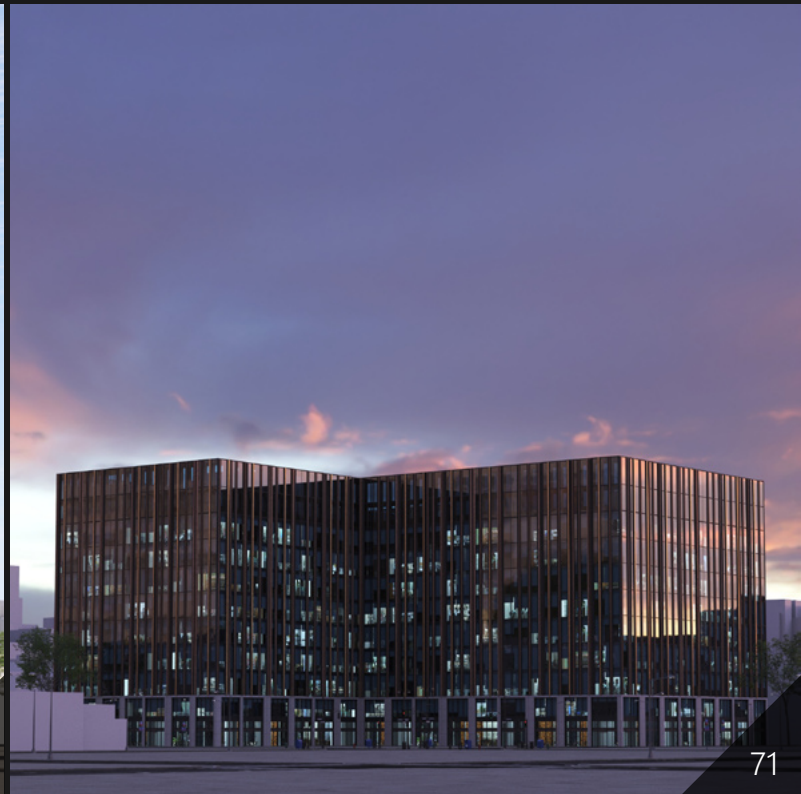
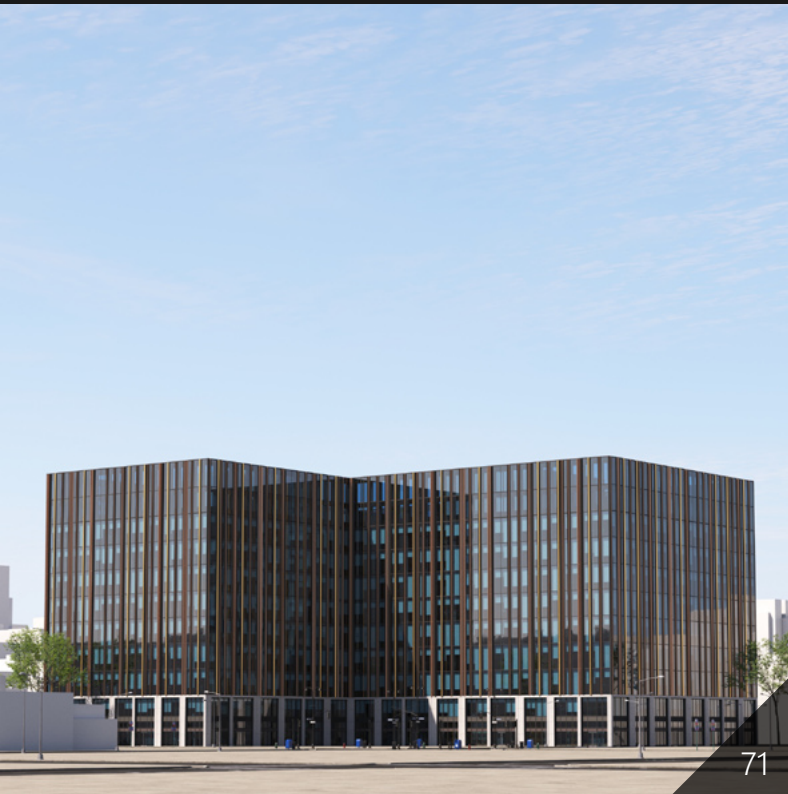
archmodels vol. 271



archmodels vol. 271



archmodels vol. 271



archmodels vol. 271



archmodels vol. 271



archmodels vol. 271



archmodels vol. 271



archmodels vol. 271

Thank you for your purchase!

We hope that this product will meet your expectations. We gave much importance to ensure that it meets the highest quality standards. If you have any questions regarding this product, please contact our Support Team: support@evermotion.org

Happy rendering!

