

archinteriors

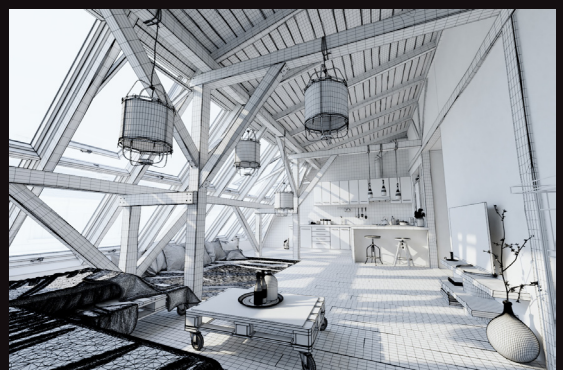
prepared only for **Blender** 2018



Have you ever wanted to make professional interior renderings in Blender? Do you know how to proper set up lighting using builtin Sun system or HDRI lighting in Cycles renderer? Have you ever had problems with composition? Archinteriors for Blender will end all your problems. Take a look at this 10 fully textured scenes with professional PBR shaders and lighting ready to render. Get your own portfolio and join cg market.



scene 01



scene 01 wire

Software and models © 2018 EVERMOTION. EVERMOTION logo is trademark or registered trademark of Evermotion Inc. in the U.S. and/or other countries. All rights reserved. All *.blend and bitmaps models included on this collection with data are an integral part of „archinteriors vol.48 for blender” and the resale of this data is strictly prohibited. All models can be used for commercial purposes only by owners who bought this collection. The sharing of collection data is strictly prohibited unless that user has written authorizati on from EVERMOTION.

archinteriors

prepared only for **Blender** 2018



Have you ever wanted to make professional interior renderings in Blender? Do you know how to proper set up lighting using builtin Sun system or HDRI lighting in Cycles renderer? Have you ever had problems with composition? Archinteriors for Blender will end all your problems. Take a look at this 10 fully textured scenes with professional PBR shaders and lighting ready to render. Get your own portfolio and join cg market.



scene 02



scene 02 wire

Software and models © 2018 EVERMOTION. EVERMOTION logo is trademark or registered trademark of Evermotion Inc. in the U.S. and/or other countries. All rights reserved. All *.blend and bitmaps models included on this collection with data are an integral part of „archinteriors vol.48 for blender” and the resale of this data is strictly prohibited. All models can be used for commercial purposes only by owners who bought this collection. The sharing of collection data is strictly prohibited unless that user has written authorization from EVERMOTION.

archinteriors

2018

prepared only for **Blender**



Have you ever wanted to make professional interior renderings in Blender? Do you know how to proper set up lighting using builtin Sun system or HDRI lighting in Cycles renderer? Have you ever had problems with composition? Archinteriors for Blender will end all your problems. Take a look at this 10 fully textured scenes with professional PBR shaders and ligthing ready to render. Get your own portfolio and join cg market.



scene 03



scene 03 wire

Software and models © 2018 EVERMOTION. EVERMOTION logo is trademark or registered trademark of Evermotion Inc. in the U.S. and/or other countries. All rights reserved. All *.blend and bitmaps models included on this collection with data are an integral part of „archinteriors vol.48 for blender” and the resale of this data is strictly prohibited. All models can be used for commercial purposes only by owners who bought this collection. The sharing of collection data is strictly prohibited unless that user has written authorizati on from EVERMOTION.

archinteriors

2018

prepared only for **Blender**



Have you ever wanted to make professional interior renderings in Blender? Do you know how to proper set up lighting using builtin Sun system or HDRI lighting in Cycles renderer? Have you ever had problems with composition? Archinteriors for Blender will end all your problems. Take a look at this 10 fully textured scenes with professional PBR shaders and lighting ready to render. Get your own portfolio and join cg market.



scene 04



scene 04 wire

Software and models © 2018 EVERMOTION. EVERMOTION logo is trademark or registered trademark of Evermotion Inc. in the U.S. and/or other countries. All rights reserved. All *.blend and bitmaps models included on this collection with data are an integral part of „archinteriors vol.48 for blender” and the resale of this data is strictly prohibited. All models can be used for commercial purposes only by owners who bought this collection. The sharing of collection data is strictly prohibited unless that user has written authorizati on from EVERMOTION.

archinteriors

2018

prepared only for **Blender**



Have you ever wanted to make professional interior renderings in Blender? Do you know how to proper set up lighting using builtin Sun system or HDRI lighting in Cycles renderer? Have you ever had problems with composition? Archinteriors for Blender will end all your problems. Take a look at this 10 fully textured scenes with professional PBR shaders and lighting ready to render. Get your own portfolio and join cg market.



scene 05



scene 05 wire

Software and models © 2018 EVERMOTION. EVERMOTION logo is trademark or registered trademark of Evermotion Inc. in the U.S. and/or other countries. All rights reserved. All *.blend and bitmaps models included on this collection with data are an integral part of „archinteriors vol.48 for blender” and the resale of this data is strictly prohibited. All models can be used for commercial purposes only by owners who bought this collection. The sharing of collection data is strictly prohibited unless that user has written authorizati on from EVERMOTION.

archinteriors

prepared only for **Blender** 2018



Have you ever wanted to make professional interior renderings in Blender? Do you know how to proper set up lighting using builtin Sun system or HDRI lighting in Cycles renderer? Have you ever had problems with composition? Archinteriors for Blender will end all your problems. Take a look at this 10 fully textured scenes with professional PBR shaders and lighting ready to render. Get your own portfolio and join cg market.



scene 06



scene 06 wire

Software and models © 2018 EVERMOTION. EVERMOTION logo is trademark or registered trademark of Evermotion Inc. in the U.S. and/or other countries. All rights reserved. All *.blend and bitmaps models included on this collection with data are an integral part of „archinteriors vol.48 for blender” and the resale of this data is strictly prohibited. All models can be used for commercial purposes only by owners who bought this collection. The sharing of collection data is strictly prohibited unless that user has written authorizati on from EVERMOTION.

archinteriors

prepared only for **Blender** 2018



Have you ever wanted to make professional interior renderings in Blender? Do you know how to proper set up lighting using builtin Sun system or HDRI lighting in Cycles renderer? Have you ever had problems with composition? Archinteriors for Blender will end all your problems. Take a look at this 10 fully textured scenes with professional PBR shaders and lighting ready to render. Get your own portfolio and join cg market.



scene 07



scene 07 wire

Software and models © 2018 EVERMOTION. EVERMOTION logo is trademark or registered trademark of Evermotion Inc. in the U.S. and/or other countries. All rights reserved. All *.blend and bitmaps models included on this collection with data are an integral part of „archinteriors vol.48 for blender” and the resale of this data is strictly prohibited. All models can be used for commercial purposes only by owners who bought this collection. The sharing of collection data is strictly prohibited unless that user has written authorizati on from EVERMOTION.

archinteriors

prepared only for **Blender** 2018



Have you ever wanted to make professional interior renderings in Blender? Do you know how to proper set up lighting using builtin Sun system or HDRI lighting in Cycles renderer? Have you ever had problems with composition? Archinteriors for Blender will end all your problems. Take a look at this 10 fully textured scenes with professional PBR shaders and lighting ready to render. Get your own portfolio and join cg market.



scene 08



scene 08 wire

Software and models © 2018 EVERMOTION. EVERMOTION logo is trademark or registered trademark of Evermotion Inc. in the U.S. and/or other countries. All rights reserved. All *.blend and bitmaps models included on this collection with data are an integral part of „archinteriors vol.48 for blender” and the resale of this data is strictly prohibited. All models can be used for commercial purposes only by owners who bought this collection. The sharing of collection data is strictly prohibited unless that user has written authorizati on from EVERMOTION.

archinteriors

prepared only for **Blender** 2018



Have you ever wanted to make professional interior renderings in Blender? Do you know how to proper set up lighting using builtin Sun system or HDRI lighting in Cycles renderer? Have you ever had problems with composition? Archinteriors for Blender will end all your problems. Take a look at this 10 fully textured scenes with professional PBR shaders and lighting ready to render. Get your own portfolio and join cg market.



scene 09



scene 09 wire

Software and models © 2018 EVERMOTION. EVERMOTION logo is trademark or registered trademark of Evermotion Inc. in the U.S. and/or other countries. All rights reserved. All *.blend and bitmaps models included on this collection with data are an integral part of „archinteriors vol.48 for blender” and the resale of this data is strictly prohibited. All models can be used for commercial purposes only by owners who bought this collection. The sharing of collection data is strictly prohibited unless that user has written authorization from EVERMOTION.

archinteriors

prepared only for **Blender** 2018



Have you ever wanted to make professional interior renderings in Blender? Do you know how to proper set up lighting using builtin Sun system or HDRI lighting in Cycles renderer? Have you ever had problems with composition? Archinteriors for Blender will end all your problems. Take a look at this 10 fully textured scenes with professional PBR shaders and lighting ready to render. Get your own portfolio and join cg market.



scene 10



scene 10 wire

Software and models © 2018 EVERMOTION. EVERMOTION logo is trademark or registered trademark of Evermotion Inc. in the U.S. and/or other countries. All rights reserved. All *.blend and bitmaps models included on this collection with data are an integral part of „archinteriors vol.48 for blender” and the resale of this data is strictly prohibited. All models can be used for commercial purposes only by owners who bought this collection. The sharing of collection data is strictly prohibited unless that user has written authorizati on from EVERMOTION.