

# archinteriors

2024

prepared only for **Unreal Engine**



Parking Lot Scene - **Archinteriors vol. 15** collection includes professional, highly detailed 3d models for architectural visualizations. This collection comes with high quality industrial models of lights, electrical equipment, fire alarms, air conditioning, security cameras - suitable for visualizations of parking lots, garages, industrial areas, publicly accessible corridors and passages. All objects are ready to use in your visualizations.

#### Collection Highlights:

- PBR and tiled materials
- UV unwrapped
- Advanced and configurable Shaders
- More than 350 meshes
- Over 200 materials
- Over 330 textures
- Full animation sequence (19 clips)
- Utilizes Nanite meshes and Lumen Lighting for superior visual fidelity
- Streaming Virtual Texturing.



AIUE5\_vol15\_01

Software and models © 2024 EVERMOTION. EVERMOTION logo is trademark or registered trademark of Evermotion Inc. in the U.S. and/or other countries. All rights reserved. All \*.uproject, \*.uasset and bitmap models included on this collection with data are an integral part of „archinteriors vol.15 for Unreal Engine” and the resale of this data is strictly prohibited. All models can be used for commercial purposes only by owners who bought this collection. The sharing of collection is strictly prohibited unless that user has written authorization from EVERMOTION.

# archinteriors

2024

prepared only for **Unreal Engine**



Parking Lot Scene - **Archinteriors vol. 15** collection includes professional, highly detailed 3d models for architectural visualizations. This collection comes with high quality industrial models of lights, electrical equipment, fire alarms, air conditioning, security cameras - suitable for visualizations of parking lots, garages, industrial areas, publicly accessible corridors and passages. All objects are ready to use in your visualizations.

#### Collection Highlights:

- PBR and tiled materials
- UV unwrapped
- Advanced and configurable Shaders
- More than 350 meshes
- Over 200 materials
- Over 330 textures
- Full animation sequence (19 clips)
- Utilizes Nanite meshes and Lumen Lighting for superior visual fidelity
- Streaming Virtual Texturing.



AIUE5\_vol15\_02

Software and models © 2024 EVERMOTION. EVERMOTION logo is trademark or registered trademark of Evermotion Inc. in the U.S. and/or other countries. All rights reserved. All \*.uproject, \*.uasset and bitmaps models included on this collection with data are an integral part of „archinteriors vol.15 for Unreal Engine” and the resale of this data is strictly prohibited. All models can be used for commercial purposes only by owners who bought this collection. The sharing of collection is strictly prohibited unless that user has written authorization from EVERMOTION.

# archinteriors

2024

prepared only for **Unreal Engine**



Parking Lot Scene - **Archinteriors vol. 15** collection includes professional, highly detailed 3d models for architectural visualizations. This collection comes with high quality industrial models of lights, electrical equipment, fire alarms, air conditioning, security cameras - suitable for visualizations of parking lots, garages, industrial areas, publicly accessible corridors and passages. All objects are ready to use in your visualizations.

#### Collection Highlights:

- PBR and tiled materials
- UV unwrapped
- Advanced and configurable Shaders
- More than 350 meshes
- Over 200 materials
- Over 330 textures
- Full animation sequence (19 clips)
- Utilizes Nanite meshes and Lumen Lighting for superior visual fidelity
- Streaming Virtual Texturing.



AIUE5\_vol15\_03

Software and models © 2024 EVERMOTION. EVERMOTION logo is trademark or registered trademark of Evermotion Inc. in the U.S. and/or other countries. All rights reserved. All \*.uproject, \*.uasset and bitmap models included on this collection with data are an integral part of „archinteriors vol.15 for Unreal Engine” and the resale of this data is strictly prohibited. All models can be used for commercial purposes only by owners who bought this collection. The sharing of collection is strictly prohibited unless that user has written authorization from EVERMOTION.

# archinteriors

2024

prepared only for **Unreal Engine**



Parking Lot Scene - **Archinteriors vol. 15** collection includes professional, highly detailed 3d models for architectural visualizations. This collection comes with high quality industrial models of lights, electrical equipment, fire alarms, air conditioning, security cameras - suitable for visualizations of parking lots, garages, industrial areas, publicly accessible corridors and passages. All objects are ready to use in your visualizations.

#### Collection Highlights:

- PBR and tiled materials
- UV unwrapped
- Advanced and configurable Shaders
- More than 350 meshes
- Over 200 materials
- Over 330 textures
- Full animation sequence (19 clips)
- Utilizes Nanite meshes and Lumen Lighting for superior visual fidelity
- Streaming Virtual Texturing.



AIUE5\_vol15\_04

Software and models © 2024 EVERMOTION. EVERMOTION logo is trademark or registered trademark of Evermotion Inc. in the U.S. and/or other countries. All rights reserved. All \*.uproject, \*.uasset and bitmap models included on this collection with data are an integral part of „archinteriors vol.15 for Unreal Engine” and the resale of this data is strictly prohibited. All models can be used for commercial purposes only by owners who bought this collection. The sharing of collection is strictly prohibited unless that user has written authorization from EVERMOTION.

# archinteriors

2024

prepared only for **Unreal Engine**



Parking Lot Scene - **Archinteriors vol. 15** collection includes professional, highly detailed 3d models for architectural visualizations. This collection comes with high quality industrial models of lights, electrical equipment, fire alarms, air conditioning, security cameras - suitable for visualizations of parking lots, garages, industrial areas, publicly accessible corridors and passages. All objects are ready to use in your visualizations.

#### Collection Highlights:

- PBR and tiled materials
- UV unwrapped
- Advanced and configurable Shaders
- More than 350 meshes
- Over 200 materials
- Over 330 textures
- Full animation sequence (19 clips)
- Utilizes Nanite meshes and Lumen Lighting for superior visual fidelity
- Streaming Virtual Texturing.



AIUE5\_vol15\_05

Software and models © 2024 EVERMOTION. EVERMOTION logo is trademark or registered trademark of Evermotion Inc. in the U.S. and/or other countries. All rights reserved. All \*.uproject, \*.uasset and bitmap models included on this collection with data are an integral part of „archinteriors vol.15 for Unreal Engine” and the resale of this data is strictly prohibited. All models can be used for commercial purposes only by owners who bought this collection. The sharing of collection is strictly prohibited unless that user has written authorization from EVERMOTION.

# archinteriors

2024

prepared only for **Unreal Engine**



Parking Lot Scene - **Archinteriors vol. 15** collection includes professional, highly detailed 3d models for architectural visualizations. This collection comes with high quality industrial models of lights, electrical equipment, fire alarms, air conditioning, security cameras - suitable for visualizations of parking lots, garages, industrial areas, publicly accessible corridors and passages. All objects are ready to use in your visualizations.

#### Collection Highlights:

- PBR and tiled materials
- UV unwrapped
- Advanced and configurable Shaders
- More than 350 meshes
- Over 200 materials
- Over 330 textures
- Full animation sequence (19 clips)
- Utilizes Nanite meshes and Lumen Lighting for superior visual fidelity
- Streaming Virtual Texturing.



AIUE5\_vol15\_06

Software and models © 2024 EVERMOTION. EVERMOTION logo is trademark or registered trademark of Evermotion Inc. in the U.S. and/or other countries. All rights reserved. All \*.uproject, \*.uasset and bitmap models included on this collection with data are an integral part of „archinteriors vol.15 for Unreal Engine” and the resale of this data is strictly prohibited. All models can be used for commercial purposes only by owners who bought this collection. The sharing of collection is strictly prohibited unless that user has written authorization from EVERMOTION.

# archinteriors

2024

prepared only for **Unreal Engine**



Parking Lot Scene - **Archinteriors vol. 15** collection includes professional, highly detailed 3d models for architectural visualizations. This collection comes with high quality industrial models of lights, electrical equipment, fire alarms, air conditioning, security cameras - suitable for visualizations of parking lots, garages, industrial areas, publicly accessible corridors and passages. All objects are ready to use in your visualizations.

#### Collection Highlights:

- PBR and tiled materials
- UV unwrapped
- Advanced and configurable Shaders
- More than 350 meshes
- Over 200 materials
- Over 330 textures
- Full animation sequence (19 clips)
- Utilizes Nanite meshes and Lumen Lighting for superior visual fidelity
- Streaming Virtual Texturing.



AIUE5\_vol15\_07

Software and models © 2024 EVERMOTION. EVERMOTION logo is trademark or registered trademark of Evermotion Inc. in the U.S. and/or other countries. All rights reserved. All \*.uproject, \*.uasset and bitmap models included on this collection with data are an integral part of „archinteriors vol.15 for Unreal Engine” and the resale of this data is strictly prohibited. All models can be used for commercial purposes only by owners who bought this collection. The sharing of collection is strictly prohibited unless that user has written authorization from EVERMOTION.

# archinteriors

2024

prepared only for **Unreal Engine**



Parking Lot Scene - **Archinteriors vol. 15** collection includes professional, highly detailed 3d models for architectural visualizations. This collection comes with high quality industrial models of lights, electrical equipment, fire alarms, air conditioning, security cameras - suitable for visualizations of parking lots, garages, industrial areas, publicly accessible corridors and passages. All objects are ready to use in your visualizations.

#### Collection Highlights:

- PBR and tiled materials
- UV unwrapped
- Advanced and configurable Shaders
- More than 350 meshes
- Over 200 materials
- Over 330 textures
- Full animation sequence (19 clips)
- Utilizes Nanite meshes and Lumen Lighting for superior visual fidelity
- Streaming Virtual Texturing.



AIUE5\_vol15\_08

Software and models © 2024 EVERMOTION. EVERMOTION logo is trademark or registered trademark of Evermotion Inc. in the U.S. and/or other countries. All rights reserved. All \*.uproject, \*.uasset and bitmap models included on this collection with data are an integral part of „archinteriors vol.15 for Unreal Engine” and the resale of this data is strictly prohibited. All models can be used for commercial purposes only by owners who bought this collection. The sharing of collection is strictly prohibited unless that user has written authorization from EVERMOTION.



# archinteriors

2024

prepared only for **Unreal Engine**



Parking Lot Scene - **Archinteriors vol. 15** collection includes professional, highly detailed 3d models for architectural visualizations. This collection comes with high quality industrial models of lights, electrical equipment, fire alarms, air conditioning, security cameras - suitable for visualizations of parking lots, garages, industrial areas, publicly accessible corridors and passages. All objects are ready to use in your visualizations.

#### Collection Highlights:

- PBR and tiled materials
- UV unwrapped
- Advanced and configurable Shaders
- More than 350 meshes
- Over 200 materials
- Over 330 textures
- Full animation sequence (19 clips)
- Utilizes Nanite meshes and Lumen Lighting for superior visual fidelity
- Streaming Virtual Texturing.



AIUE5\_vol15\_09

Software and models © 2024 EVERMOTION. EVERMOTION logo is trademark or registered trademark of Evermotion Inc. in the U.S. and/or other countries. All rights reserved. All \*.uproject, \*.uasset and bitmaps models included on this collection with data are an integral part of „archinteriors vol.15 for Unreal Engine” and the resale of this data is strictly prohibited. All models can be used for commercial purposes only by owners who bought this collection. The sharing of collection is strictly prohibited unless that user has written authorization from EVERMOTION.

# archinteriors

2024

prepared only for **Unreal Engine**



Parking Lot Scene - **Archinteriors vol. 15** collection includes professional, highly detailed 3d models for architectural visualizations. This collection comes with high quality industrial models of lights, electrical equipment, fire alarms, air conditioning, security cameras - suitable for visualizations of parking lots, garages, industrial areas, publicly accessible corridors and passages. All objects are ready to use in your visualizations.

**Collection Highlights:**

- PBR and tiled materials
- UV unwrapped
- Advanced and configurable Shaders
- More than 350 meshes
- Over 200 materials
- Over 330 textures
- Full animation sequence (19 clips)
- Utilizes Nanite meshes and Lumen Lighting for superior visual fidelity
- Streaming Virtual Texturing.



AIUE5\_vol15\_10

# archinteriors

2024

prepared only for **Unreal Engine**



Parking Lot Scene - **Archinteriors vol. 15** collection includes professional, highly detailed 3d models for architectural visualizations. This collection comes with high quality industrial models of lights, electrical equipment, fire alarms, air conditioning, security cameras - suitable for visualizations of parking lots, garages, industrial areas, publicly accessible corridors and passages. All objects are ready to use in your visualizations.

**Collection Highlights:**

- PBR and tiled materials
- UV unwrapped
- Advanced and configurable Shaders
- More than 350 meshes
- Over 200 materials
- Over 330 textures
- Full animation sequence (19 clips)
- Utilizes Nanite meshes and Lumen Lighting for superior visual fidelity
- Streaming Virtual Texturing.



AIUE5\_vol15\_11

Software and models © 2024 EVERMOTION. EVERMOTION logo is trademark or registered trademark of Evermotion Inc. in the U.S. and/or other countries. All rights reserved. All \*.uproject, \*.uasset and bitmap models included on this collection with data are an integral part of „archinteriors vol.15 for Unreal Engine” and the resale of this data is strictly prohibited. All models can be used for commercial purposes only by owners who bought this collection. The sharing of collection is strictly prohibited unless that user has written authorization from EVERMOTION.

# archinteriors

2024

prepared only for **Unreal Engine**



Parking Lot Scene - **Archinteriors vol. 15** collection includes professional, highly detailed 3d models for architectural visualizations. This collection comes with high quality industrial models of lights, electrical equipment, fire alarms, air conditioning, security cameras - suitable for visualizations of parking lots, garages, industrial areas, publicly accessible corridors and passages. All objects are ready to use in your visualizations.

#### Collection Highlights:

- PBR and tiled materials
- UV unwrapped
- Advanced and configurable Shaders
- More than 350 meshes
- Over 200 materials
- Over 330 textures
- Full animation sequence (19 clips)
- Utilizes Nanite meshes and Lumen Lighting for superior visual fidelity
- Streaming Virtual Texturing.



AIUE5\_vol15\_12

Software and models © 2024 EVERMOTION. EVERMOTION logo is trademark or registered trademark of Evermotion Inc. in the U.S. and/or other countries. All rights reserved. All \*.uproject, \*.uasset and bitmap models included on this collection with data are an integral part of „archinteriors vol.15 for Unreal Engine” and the resale of this data is strictly prohibited. All models can be used for commercial purposes only by owners who bought this collection. The sharing of collection is strictly prohibited unless that user has written authorization from EVERMOTION.

# archinteriors

2024

prepared only for **Unreal Engine**



Parking Lot Scene - **Archinteriors vol. 15** collection includes professional, highly detailed 3d models for architectural visualizations. This collection comes with high quality industrial models of lights, electrical equipment, fire alarms, air conditioning, security cameras - suitable for visualizations of parking lots, garages, industrial areas, publicly accessible corridors and passages. All objects are ready to use in your visualizations.

#### Collection Highlights:

- PBR and tiled materials
- UV unwrapped
- Advanced and configurable Shaders
- More than 350 meshes
- Over 200 materials
- Over 330 textures
- Full animation sequence (19 clips)
- Utilizes Nanite meshes and Lumen Lighting for superior visual fidelity
- Streaming Virtual Texturing.



AIUE5\_vol15\_13

Software and models © 2024 EVERMOTION. EVERMOTION logo is trademark or registered trademark of Evermotion Inc. in the U.S. and/or other countries. All rights reserved. All \*.uproject, \*.uasset and bitmaps models included on this collection with data are an integral part of „archinteriors vol.15 for Unreal Engine” and the resale of this data is strictly prohibited. All models can be used for commercial purposes only by owners who bought this collection. The sharing of collection is strictly prohibited unless that user has written authorization from EVERMOTION.

# archinteriors

2024

prepared only for **Unreal Engine**



Parking Lot Scene - **Archinteriors vol. 15** collection includes professional, highly detailed 3d models for architectural visualizations. This collection comes with high quality industrial models of lights, electrical equipment, fire alarms, air conditioning, security cameras - suitable for visualizations of parking lots, garages, industrial areas, publicly accessible corridors and passages. All objects are ready to use in your visualizations.

#### Collection Highlights:

- PBR and tiled materials
- UV unwrapped
- Advanced and configurable Shaders
- More than 350 meshes
- Over 200 materials
- Over 330 textures
- Full animation sequence (19 clips)
- Utilizes Nanite meshes and Lumen Lighting for superior visual fidelity
- Streaming Virtual Texturing.



AIUE5\_vol15\_14

Software and models © 2024 EVERMOTION. EVERMOTION logo is trademark or registered trademark of Evermotion Inc. in the U.S. and/or other countries. All rights reserved. All \*.uproject, \*.uasset and bitmap models included on this collection with data are an integral part of „archinteriors vol.15 for Unreal Engine” and the resale of this data is strictly prohibited. All models can be used for commercial purposes only by owners who bought this collection. The sharing of collection is strictly prohibited unless that user has written authorization from EVERMOTION.

# archinteriors

2024

prepared only for **Unreal Engine**



Parking Lot Scene - **Archinteriors vol. 15** collection includes professional, highly detailed 3d models for architectural visualizations. This collection comes with high quality industrial models of lights, electrical equipment, fire alarms, air conditioning, security cameras - suitable for visualizations of parking lots, garages, industrial areas, publicly accessible corridors and passages. All objects are ready to use in your visualizations.

#### Collection Highlights:

- PBR and tiled materials
- UV unwrapped
- Advanced and configurable Shaders
- More than 350 meshes
- Over 200 materials
- Over 330 textures
- Full animation sequence (19 clips)
- Utilizes Nanite meshes and Lumen Lighting for superior visual fidelity
- Streaming Virtual Texturing.



AIUE5\_vol15\_15

Software and models © 2024 EVERMOTION. EVERMOTION logo is trademark or registered trademark of Evermotion Inc. in the U.S. and/or other countries. All rights reserved. All \*.uproject, \*.uasset and bitmap models included on this collection with data are an integral part of „archinteriors vol.15 for Unreal Engine” and the resale of this data is strictly prohibited. All models can be used for commercial purposes only by owners who bought this collection. The sharing of collection is strictly prohibited unless that user has written authorization from EVERMOTION.

# archinteriors

2024

prepared only for **Unreal Engine**



Parking Lot Scene - **Archinteriors vol. 15** collection includes professional, highly detailed 3d models for architectural visualizations. This collection comes with high quality industrial models of lights, electrical equipment, fire alarms, air conditioning, security cameras - suitable for visualizations of parking lots, garages, industrial areas, publicly accessible corridors and passages. All objects are ready to use in your visualizations.

#### Collection Highlights:

- PBR and tiled materials
- UV unwrapped
- Advanced and configurable Shaders
- More than 350 meshes
- Over 200 materials
- Over 330 textures
- Full animation sequence (19 clips)
- Utilizes Nanite meshes and Lumen Lighting for superior visual fidelity
- Streaming Virtual Texturing.



AIUE5\_vol15\_16

Software and models © 2024 EVERMOTION. EVERMOTION logo is trademark or registered trademark of Evermotion Inc. in the U.S. and/or other countries. All rights reserved. All \*.uproject, \*.uasset and bitmaps models included on this collection with data are an integral part of „archinteriors vol.15 for Unreal Engine” and the resale of this data is strictly prohibited. All models can be used for commercial purposes only by owners who bought this collection. The sharing of collection is strictly prohibited unless that user has written authorization from EVERMOTION.



# archinteriors

2024

prepared only for **Unreal Engine**



Parking Lot Scene - Archinteriors vol. 15 collection includes professional, highly detailed 3d models for architectural visualizations. This collection comes with high quality industrial models of lights, electrical equipment, fire alarms, air conditioning, security cameras - suitable for visualizations of parking lots, garages, industrial areas, publicly accessible corridors and passages. All objects are ready to use in your visualizations.

**Collection Highlights:**

- PBR and tiled materials
- UV unwrapped
- Advanced and configurable Shaders
- More than 350 meshes
- Over 200 materials
- Over 330 textures
- Full animation sequence (19 clips)
- Utilizes Nanite meshes and Lumen Lighting for superior visual fidelity
- Streaming Virtual Texturing.



AIUE5\_vol15\_17

Software and models © 2024 EVERMOTION. EVERMOTION logo is trademark or registered trademark of Evermotion Inc. in the U.S. and/or other countries. All rights reserved. All \*.uproject, \*.uasset and bitmap models included on this collection with data are an integral part of „archinteriors vol.15 for Unreal Engine” and the resale of this data is strictly prohibited. All models can be used for commercial purposes only by owners who bought this collection. The sharing of collection is strictly prohibited unless that user has written authorization from EVERMOTION.

# archinteriors

2024

prepared only for **Unreal Engine**



Parking Lot Scene - **Archinteriors vol. 15** collection includes professional, highly detailed 3d models for architectural visualizations. This collection comes with high quality industrial models of lights, electrical equipment, fire alarms, air conditioning, security cameras - suitable for visualizations of parking lots, garages, industrial areas, publicly accessible corridors and passages. All objects are ready to use in your visualizations.

#### Collection Highlights:

- PBR and tiled materials
- UV unwrapped
- Advanced and configurable Shaders
- More than 350 meshes
- Over 200 materials
- Over 330 textures
- Full animation sequence (19 clips)
- Utilizes Nanite meshes and Lumen Lighting for superior visual fidelity
- Streaming Virtual Texturing.



AIUE5\_vol15\_18

Software and models © 2024 EVERMOTION. EVERMOTION logo is trademark or registered trademark of Evermotion Inc. in the U.S. and/or other countries. All rights reserved. All \*.uproject, \*.uasset and bitmaps models included on this collection with data are an integral part of „archinteriors vol.15 for Unreal Engine” and the resale of this data is strictly prohibited. All models can be used for commercial purposes only by owners who bought this collection. The sharing of collection is strictly prohibited unless that user has written authorization from EVERMOTION.

# archinteriors

2024

prepared only for **Unreal Engine**



Parking Lot Scene - **Archinteriors vol. 15** collection includes professional, highly detailed 3d models for architectural visualizations. This collection comes with high quality industrial models of lights, electrical equipment, fire alarms, air conditioning, security cameras - suitable for visualizations of parking lots, garages, industrial areas, publicly accessible corridors and passages. All objects are ready to use in your visualizations.

**Collection Highlights:**

- PBR and tiled materials
- UV unwrapped
- Advanced and configurable Shaders
- More than 350 meshes
- Over 200 materials
- Over 330 textures
- Full animation sequence (19 clips)
- Utilizes Nanite meshes and Lumen Lighting for superior visual fidelity
- Streaming Virtual Texturing.



AIUE5\_vol15\_19

Software and models © 2024 EVERMOTION. EVERMOTION logo is trademark or registered trademark of Evermotion Inc. in the U.S. and/or other countries. All rights reserved. All \*.uproject, \*.uasset and bitmaps models included on this collection with data are an integral part of „archinteriors vol.15 for Unreal Engine” and the resale of this data is strictly prohibited. All models can be used for commercial purposes only by owners who bought this collection. The sharing of collection is strictly prohibited unless that user has written authorization from EVERMOTION.

# archinteriors

2024

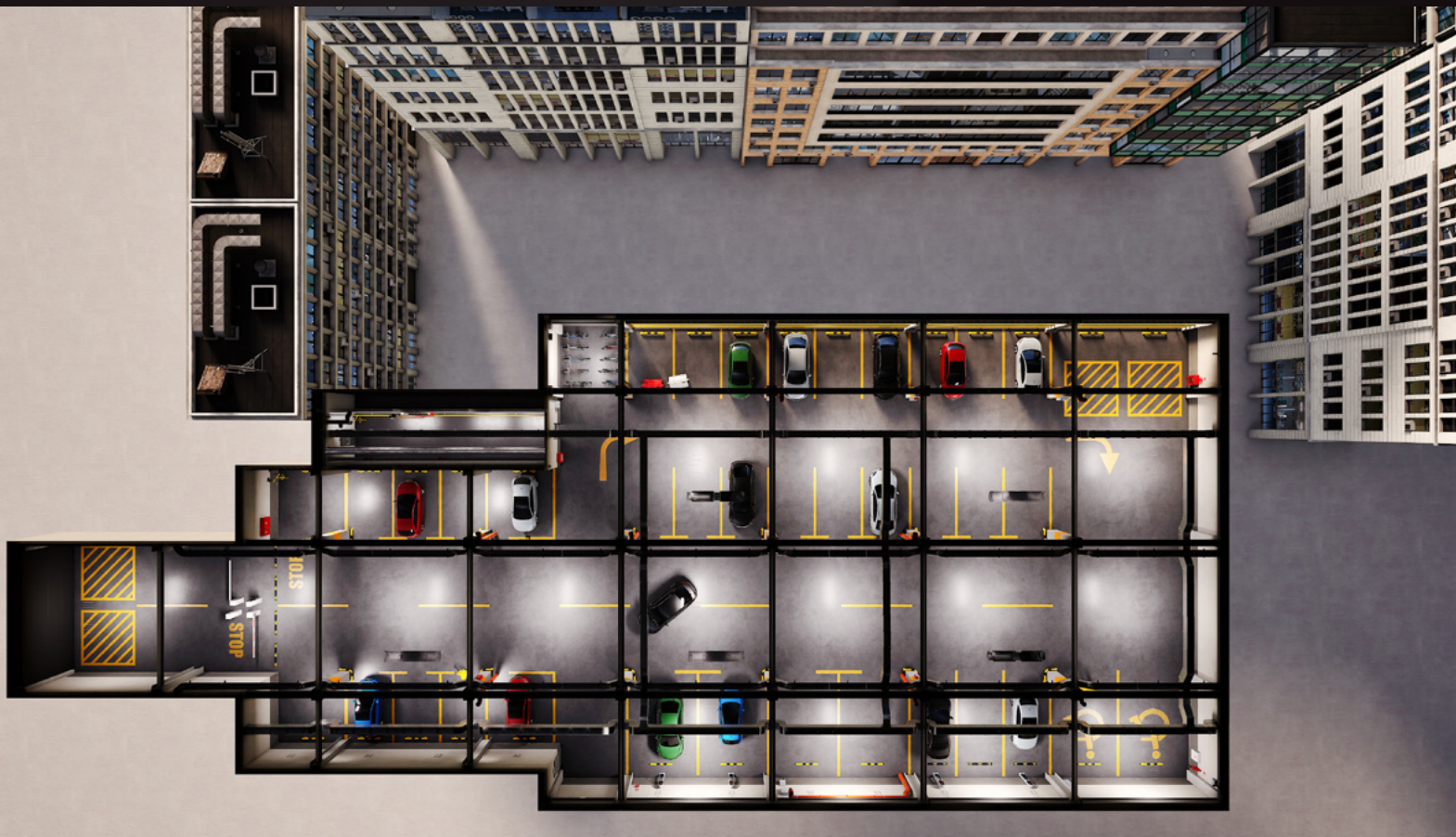
prepared only for **Unreal Engine**



Parking Lot Scene - **Archinteriors vol. 15** collection includes professional, highly detailed 3d models for architectural visualizations. This collection comes with high quality industrial models of lights, electrical equipment, fire alarms, air conditioning, security cameras - suitable for visualizations of parking lots, garages, industrial areas, publicly accessible corridors and passages. All objects are ready to use in your visualizations.

**Collection Highlights:**

- PBR and tiled materials
- UV unwrapped
- Advanced and configurable Shaders
- More than 350 meshes
- Over 200 materials
- Over 330 textures
- Full animation sequence (19 clips)
- Utilizes Nanite meshes and Lumen Lighting for superior visual fidelity
- Streaming Virtual Texturing.



AIUE5\_vol15\_20

Software and models © 2024 EVERMOTION. EVERMOTION logo is trademark or registered trademark of Evermotion Inc. in the U.S. and/or other countries. All rights reserved. All \*.uproject, \*.uasset and bitmaps models included on this collection with data are an integral part of „archinteriors vol.15 for Unreal Engine” and the resale of this data is strictly prohibited. All models can be used for commercial purposes only by owners who bought this collection. The sharing of collection is strictly prohibited unless that user has written authorization from EVERMOTION.

# archinteriors

2024

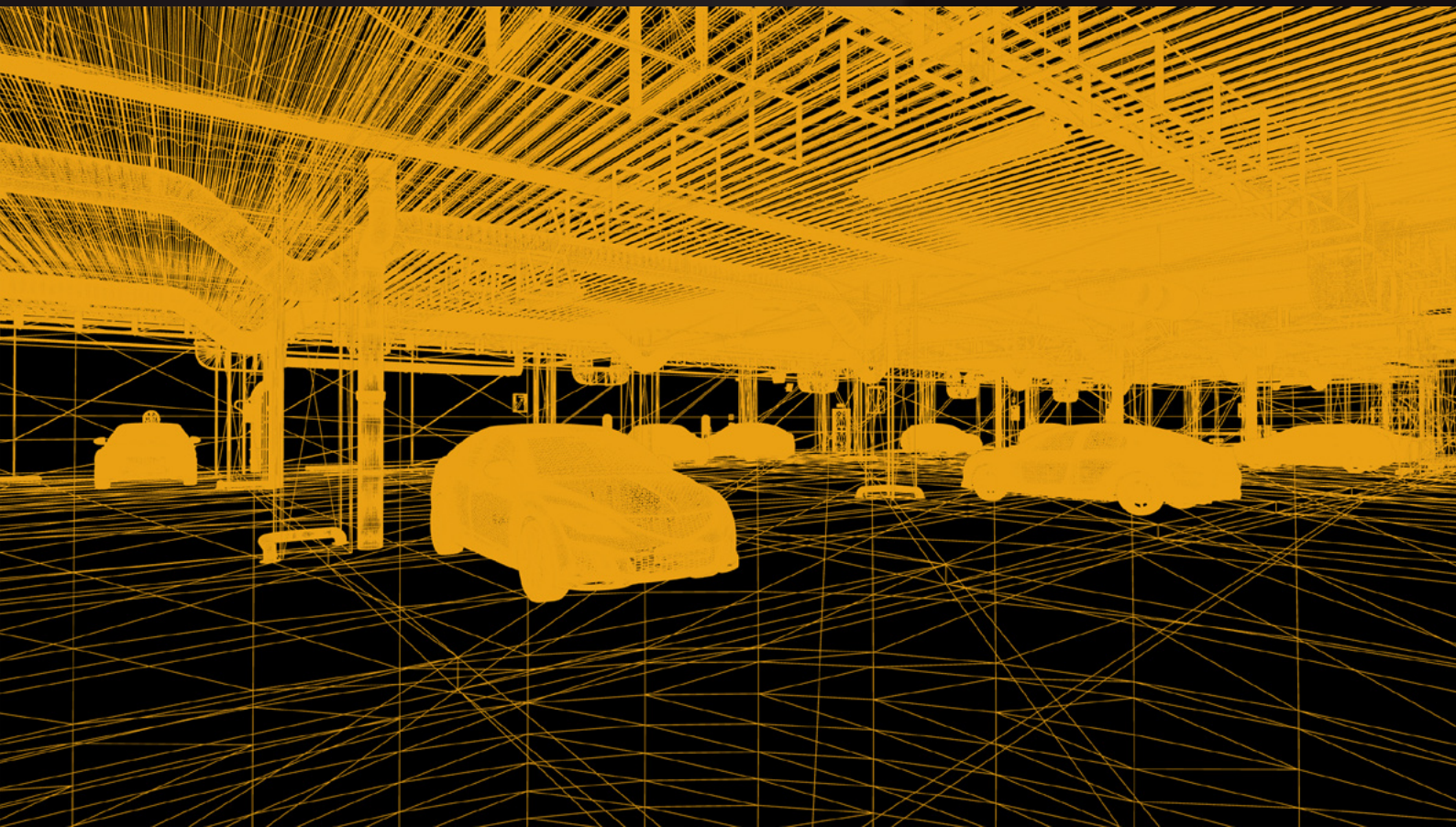
prepared only for **Unreal Engine**



Parking Lot Scene - **Archinteriors vol. 15** collection includes professional, highly detailed 3d models for architectural visualizations. This collection comes with high quality industrial models of lights, electrical equipment, fire alarms, air conditioning, security cameras - suitable for visualizations of parking lots, garages, industrial areas, publicly accessible corridors and passages. All objects are ready to use in your visualizations.

#### Collection Highlights:

- PBR and tiled materials
- UV unwrapped
- Advanced and configurable Shaders
- More than 350 meshes
- Over 200 materials
- Over 330 textures
- Full animation sequence (19 clips)
- Utilizes Nanite meshes and Lumen Lighting for superior visual fidelity
- Streaming Virtual Texturing.



AIUE5\_vol14\_wireframe

Software and models © 2024 EVERMOTION. EVERMOTION logo is trademark or registered trademark of Evermotion Inc. in the U.S. and/or other countries. All rights reserved. All \*.uproject, \*.uasset and bitmaps models included on this collection with data are an integral part of „archinteriors vol.15 for Unreal Engine” and the resale of this data is strictly prohibited. All models can be used for commercial purposes only by owners who bought this collection. The sharing of collection is strictly prohibited unless that user has written authorization from EVERMOTION.