

archinteriors

2023

prepared only for **Unreal Engine**



Archinteriors for Unreal Engine vol. 11 consists of five interior scenes of modern office workspaces. Each scene is a complete interior and contains various zones that characterize modern work spaces. You can find here a co-working zones, relaxation areas and a meeting spots which, interpenetrating each other, create an attractive work environment. All scenes are lit with Lumen, delivering perfect balance between high performance, lighting quality and flexibility. All interiors are fully modular and easy to re-use in your projects. Collection contains 40 animation shots set in Unreal Engine Sequencer.



screenshot scene 01 cam 01

Software and models © 2023 EVERMOTION. EVERMOTION logo is trademark or registered trademark of Evermotion Inc. in the U.S. and/or other countries. All rights reserved. All *.uproject, *.uasset and bitmaps models included on this collection with data are an integral part of „archinteriors vol.11 for Unreal Engine” and the resale of this data is strictly prohibited. All models can be used for commercial purposes only by owners who bought this collection. The sharing of collection is strictly prohibited unless that user has written authorization from EVERMOTION.

archinteriors

2023

prepared only for **Unreal Engine**



Archinteriors for Unreal Engine vol. 11 consists of five interior scenes of modern office workspaces. Each scene is a complete interior and contains various zones that characterize modern work spaces. You can find here a co-working zones, relaxation areas and a meeting spots which, interpenetrating each other, create an attractive work environment. All scenes are lit with Lumen, delivering perfect balance between high performance, lighting quality and flexibility. All interiors are fully modular and easy to re-use in your projects. Collection contains 40 animation shots set in Unreal Engine Sequencer.



screenshot scene 01 cam 02

archinteriors

2023

prepared only for **Unreal Engine**



Archinteriors for Unreal Engine vol. 11 consists of five interior scenes of modern office workspaces. Each scene is a complete interior and contains various zones that characterize modern work spaces. You can find here a co-working zones, relaxation areas and a meeting spots which, interpenetrating each other, create an attractive work environment. All scenes are lit with Lumen, delivering perfect balance between high performance, lighting quality and flexibility. All interiors are fully modular and easy to re-use in your projects. Collection contains 40 animation shots set in Unreal Engine Sequencer.



screenshot scene 01 cam 03

archinteriors

2023

prepared only for **Unreal Engine**



Archinteriors for Unreal Engine vol. 11 consists of five interior scenes of modern office workspaces. Each scene is a complete interior and contains various zones that characterize modern work spaces. You can find here a co-working zones, relaxation areas and a meeting spots which, interpenetrating each other, create an attractive work environment. All scenes are lit with Lumen, delivering perfect balance between high performance, lighting quality and flexibility. All interiors are fully modular and easy to re-use in your projects. Collection contains 40 animation shots set in Unreal Engine Sequencer.



screenshot scene 01 cam 04

archinteriors

2023

prepared only for **Unreal Engine**



Archinteriors for Unreal Engine vol. 11 consists of five interior scenes of modern office workspaces. Each scene is a complete interior and contains various zones that characterize modern work spaces. You can find here a co-working zones, relaxation areas and a meeting spots which, interpenetrating each other, create an attractive work environment. All scenes are lit with Lumen, delivering perfect balance between high performance, lighting quality and flexibility. All interiors are fully modular and easy to re-use in your projects. Collection contains 40 animation shots set in Unreal Engine Sequencer.



screenshot scene 01 cam 05

Software and models © 2023 EVERMOTION. EVERMOTION logo is trademark or registered trademark of Evermotion Inc. in the U.S. and/or other countries. All rights reserved. All *.uproject, *.uasset and bitmap models included on this collection with data are an integral part of „archinteriors vol.11 for Unreal Engine” and the resale of this data is strictly prohibited. All models can be used for commercial purposes only by owners who bought this collection. The sharing of collection is strictly prohibited unless that user has written authorization from EVERMOTION.

archinteriors

2023

prepared only for **Unreal Engine**



Archinteriors for Unreal Engine vol. 11 consists of five interior scenes of modern office workspaces. Each scene is a complete interior and contains various zones that characterize modern work spaces. You can find here a co-working zones, relaxation areas and a meeting spots which, interpenetrating each other, create an attractive work environment. All scenes are lit with Lumen, delivering perfect balance between high performance, lighting quality and flexibility. All interiors are fully modular and easy to re-use in your projects. Collection contains 40 animation shots set in Unreal Engine Sequencer.



screenshot scene 01 cam 06

Software and models © 2023 EVERMOTION. EVERMOTION logo is trademark or registered trademark of Evermotion Inc. in the U.S. and/or other countries. All rights reserved. All *.uproject, *.uasset and bitmap models included on this collection with data are an integral part of „archinteriors vol.11 for Unreal Engine” and the resale of this data is strictly prohibited. All models can be used for commercial purposes only by owners who bought this collection. The sharing of collection is strictly prohibited unless that user has written authorization from EVERMOTION.

archinteriors

2023

prepared only for **Unreal Engine**



Archinteriors for Unreal Engine vol. 11 consists of five interior scenes of modern office workspaces. Each scene is a complete interior and contains various zones that characterize modern work spaces. You can find here a co-working zones, relaxation areas and a meeting spots which, interpenetrating each other, create an attractive work environment. All scenes are lit with Lumen, delivering perfect balance between high performance, lighting quality and flexibility. All interiors are fully modular and easy to re-use in your projects. Collection contains 40 animation shots set in Unreal Engine Sequencer.



screenshot scene 01 cam 07

Software and models © 2023 EVERMOTION. EVERMOTION logo is trademark or registered trademark of Evermotion Inc. in the U.S. and/or other countries. All rights reserved. All *.uproject, *.uasset and bitmaps models included on this collection with data are an integral part of „archinteriors vol.11 for Unreal Engine” and the resale of this data is strictly prohibited. All models can be used for commercial purposes only by owners who bought this collection. The sharing of collection is strictly prohibited unless that user has written authorization from EVERMOTION.

archinteriors

2023

prepared only for **Unreal Engine**



Archinteriors for Unreal Engine vol. 11 consists of five interior scenes of modern office workspaces. Each scene is a complete interior and contains various zones that characterize modern work spaces. You can find here a co-working zones, relaxation areas and a meeting spots which, interpenetrating each other, create an attractive work environment. All scenes are lit with Lumen, delivering perfect balance between high performance, lighting quality and flexibility. All interiors are fully modular and easy to re-use in your projects. Collection contains 40 animation shots set in Unreal Engine Sequencer.



screenshot scene 01 cam 08

archinteriors

2023

prepared only for **Unreal Engine**



Archinteriors for Unreal Engine vol. 11 consists of five interior scenes of modern office workspaces. Each scene is a complete interior and contains various zones that characterize modern work spaces. You can find here a co-working zones, relaxation areas and a meeting spots which, interpenetrating each other, create an attractive work environment. All scenes are lit with Lumen, delivering perfect balance between high performance, lighting quality and flexibility. All interiors are fully modular and easy to re-use in your projects. Collection contains 40 animation shots set in Unreal Engine Sequencer.



screenshot scene 01 cam 09

Software and models © 2023 EVERMOTION. EVERMOTION logo is trademark or registered trademark of Evermotion Inc. in the U.S. and/or other countries. All rights reserved. All *.uproject, *.uasset and bitmaps models included on this collection with data are an integral part of „archinteriors vol.11 for Unreal Engine” and the resale of this data is strictly prohibited. All models can be used for commercial purposes only by owners who bought this collection. The sharing of collection is strictly prohibited unless that user has written authorization from EVERMOTION.

archinteriors

2023

prepared only for **Unreal Engine**



Archinteriors for Unreal Engine vol. 11 consists of five interior scenes of modern office workspaces. Each scene is a complete interior and contains various zones that characterize modern work spaces. You can find here a co-working zones, relaxation areas and a meeting spots which, interpenetrating each other, create an attractive work environment. All scenes are lit with Lumen, delivering perfect balance between high performance, lighting quality and flexibility. All interiors are fully modular and easy to re-use in your projects. Collection contains 40 animation shots set in Unreal Engine Sequencer.



overview scene 01

Software and models © 2023 EVERMOTION. EVERMOTION logo is trademark or registered trademark of Evermotion Inc. in the U.S. and/or other countries. All rights reserved. All *.uproject, *.uasset and bitmaps models included on this collection with data are an integral part of „archinteriors vol.11 for Unreal Engine” and the resale of this data is strictly prohibited. All models can be used for commercial purposes only by owners who bought this collection. The sharing of collection is strictly prohibited unless that user has written authorization from EVERMOTION.

archinteriors

2023

prepared only for **Unreal Engine**



Archinteriors for Unreal Engine vol. 11 consists of five interior scenes of modern office workspaces. Each scene is a complete interior and contains various zones that characterize modern work spaces. You can find here a co-working zones, relaxation areas and a meeting spots which, interpenetrating each other, create an attractive work environment. All scenes are lit with Lumen, delivering perfect balance between high performance, lighting quality and flexibility. All interiors are fully modular and easy to re-use in your projects. Collection contains 40 animation shots set in Unreal Engine Sequencer.



screenshot scene 02 cam 01

Software and models © 2023 EVERMOTION. EVERMOTION logo is trademark or registered trademark of Evermotion Inc. in the U.S. and/or other countries. All rights reserved. All *.uproject, *.uasset and bitmap models included on this collection with data are an integral part of „archinteriors vol.11 for Unreal Engine” and the resale of this data is strictly prohibited. All models can be used for commercial purposes only by owners who bought this collection. The sharing of collection is strictly prohibited unless that user has written authorization from EVERMOTION.

archinteriors

2023

prepared only for **Unreal Engine**



Archinteriors for Unreal Engine vol. 11 consists of five interior scenes of modern office workspaces. Each scene is a complete interior and contains various zones that characterize modern work spaces. You can find here a co-working zones, relaxation areas and a meeting spots which, interpenetrating each other, create an attractive work environment. All scenes are lit with Lumen, delivering perfect balance between high performance, lighting quality and flexibility. All interiors are fully modular and easy to re-use in your projects. Collection contains 40 animation shots set in Unreal Engine Sequencer.



screenshot scene 02 cam 02

Software and models © 2023 EVERMOTION. EVERMOTION logo is trademark or registered trademark of Evermotion Inc. in the U.S. and/or other countries. All rights reserved. All *.uproject, *.uasset and bitmap models included on this collection with data are an integral part of „archinteriors vol.11 for Unreal Engine” and the resale of this data is strictly prohibited. All models can be used for commercial purposes only by owners who bought this collection. The sharing of collection is strictly prohibited unless that user has written authorization from EVERMOTION.

archinteriors

2023

prepared only for **Unreal Engine**



Archinteriors for Unreal Engine vol. 11 consists of five interior scenes of modern office workspaces. Each scene is a complete interior and contains various zones that characterize modern work spaces. You can find here a co-working zones, relaxation areas and a meeting spots which, interpenetrating each other, create an attractive work environment. All scenes are lit with Lumen, delivering perfect balance between high performance, lighting quality and flexibility. All interiors are fully modular and easy to re-use in your projects. Collection contains 40 animation shots set in Unreal Engine Sequencer.



screenshot scene 02 cam 03

Software and models © 2023 EVERMOTION. EVERMOTION logo is trademark or registered trademark of Evermotion Inc. in the U.S. and/or other countries. All rights reserved. All *.uproject, *.uasset and bitmaps models included on this collection with data are an integral part of „archinteriors vol.11 for Unreal Engine” and the resale of this data is strictly prohibited. All models can be used for commercial purposes only by owners who bought this collection. The sharing of collection is strictly prohibited unless that user has written authorization from EVERMOTION.

archinteriors

2023

prepared only for **Unreal Engine**



Archinteriors for Unreal Engine vol. 11 consists of five interior scenes of modern office workspaces. Each scene is a complete interior and contains various zones that characterize modern work spaces. You can find here a co-working zones, relaxation areas and a meeting spots which, interpenetrating each other, create an attractive work environment. All scenes are lit with Lumen, delivering perfect balance between high performance, lighting quality and flexibility. All interiors are fully modular and easy to re-use in your projects. Collection contains 40 animation shots set in Unreal Engine Sequencer.



screenshot scene 02 cam 04

Software and models © 2023 EVERMOTION. EVERMOTION logo is trademark or registered trademark of Evermotion Inc. in the U.S. and/or other countries. All rights reserved. All *.uproject, *.uasset and bitmaps models included on this collection with data are an integral part of „archinteriors vol.11 for Unreal Engine” and the resale of this data is strictly prohibited. All models can be used for commercial purposes only by owners who bought this collection. The sharing of collection is strictly prohibited unless that user has written authorization from EVERMOTION.

archinteriors

2023

prepared only for **Unreal Engine**



Archinteriors for Unreal Engine vol. 11 consists of five interior scenes of modern office workspaces. Each scene is a complete interior and contains various zones that characterize modern work spaces. You can find here a co-working zones, relaxation areas and a meeting spots which, interpenetrating each other, create an attractive work environment. All scenes are lit with Lumen, delivering perfect balance between high performance, lighting quality and flexibility. All interiors are fully modular and easy to re-use in your projects. Collection contains 40 animation shots set in Unreal Engine Sequencer.



screenshot scene 02 cam 05

Software and models © 2023 EVERMOTION. EVERMOTION logo is trademark or registered trademark of Evermotion Inc. in the U.S. and/or other countries. All rights reserved. All *.uproject, *.uasset and bitmaps models included on this collection with data are an integral part of „archinteriors vol.11 for Unreal Engine” and the resale of this data is strictly prohibited. All models can be used for commercial purposes only by owners who bought this collection. The sharing of collection is strictly prohibited unless that user has written authorization from EVERMOTION.

archinteriors

2023

prepared only for **Unreal Engine**



Archinteriors for Unreal Engine vol. 11 consists of five interior scenes of modern office workspaces. Each scene is a complete interior and contains various zones that characterize modern work spaces. You can find here a co-working zones, relaxation areas and a meeting spots which, interpenetrating each other, create an attractive work environment. All scenes are lit with Lumen, delivering perfect balance between high performance, lighting quality and flexibility. All interiors are fully modular and easy to re-use in your projects. Collection contains 40 animation shots set in Unreal Engine Sequencer.



screenshot scene 02 cam 06

Software and models © 2023 EVERMOTION. EVERMOTION logo is trademark or registered trademark of Evermotion Inc. in the U.S. and/or other countries. All rights reserved. All *.uproject, *.uasset and bitmaps models included on this collection with data are an integral part of „archinteriors vol.11 for Unreal Engine” and the resale of this data is strictly prohibited. All models can be used for commercial purposes only by owners who bought this collection. The sharing of collection is strictly prohibited unless that user has written authorization from EVERMOTION.

archinteriors

2023

prepared only for **Unreal Engine**



Archinteriors for Unreal Engine vol. 11 consists of five interior scenes of modern office workspaces. Each scene is a complete interior and contains various zones that characterize modern work spaces. You can find here a co-working zones, relaxation areas and a meeting spots which, interpenetrating each other, create an attractive work environment. All scenes are lit with Lumen, delivering perfect balance between high performance, lighting quality and flexibility. All interiors are fully modular and easy to re-use in your projects. Collection contains 40 animation shots set in Unreal Engine Sequencer.



screenshot scene 02 cam 07

Software and models © 2023 EVERMOTION. EVERMOTION logo is trademark or registered trademark of Evermotion Inc. in the U.S. and/or other countries. All rights reserved. All *.uproject, *.uasset and bitmaps models included on this collection with data are an integral part of „archinteriors vol.11 for Unreal Engine” and the resale of this data is strictly prohibited. All models can be used for commercial purposes only by owners who bought this collection. The sharing of collection is strictly prohibited unless that user has written authorization from EVERMOTION.

archinteriors

2023

prepared only for **Unreal Engine**



Archinteriors for Unreal Engine vol. 11 consists of five interior scenes of modern office workspaces. Each scene is a complete interior and contains various zones that characterize modern work spaces. You can find here a co-working zones, relaxation areas and a meeting spots which, interpenetrating each other, create an attractive work environment. All scenes are lit with Lumen, delivering perfect balance between high performance, lighting quality and flexibility. All interiors are fully modular and easy to re-use in your projects. Collection contains 40 animation shots set in Unreal Engine Sequencer.



screenshot scene 02 cam 08

archinteriors

2023

prepared only for **Unreal Engine**



Archinteriors for Unreal Engine vol. 11 consists of five interior scenes of modern office workspaces. Each scene is a complete interior and contains various zones that characterize modern work spaces. You can find here a co-working zones, relaxation areas and a meeting spots which, interpenetrating each other, create an attractive work environment. All scenes are lit with Lumen, delivering perfect balance between high performance, lighting quality and flexibility. All interiors are fully modular and easy to re-use in your projects. Collection contains 40 animation shots set in Unreal Engine Sequencer.



screenshot scene 02 cam 09

Software and models © 2023 EVERMOTION. EVERMOTION logo is trademark or registered trademark of Evermotion Inc. in the U.S. and/or other countries. All rights reserved. All *.uproject, *.uasset and bitmap models included on this collection with data are an integral part of „archinteriors vol.11 for Unreal Engine” and the resale of this data is strictly prohibited. All models can be used for commercial purposes only by owners who bought this collection. The sharing of collection is strictly prohibited unless that user has written authorization from EVERMOTION.

archinteriors

2023

prepared only for **Unreal Engine**



Archinteriors for Unreal Engine vol. 11 consists of five interior scenes of modern office workspaces. Each scene is a complete interior and contains various zones that characterize modern work spaces. You can find here a co-working zones, relaxation areas and a meeting spots which, interpenetrating each other, create an attractive work environment. All scenes are lit with Lumen, delivering perfect balance between high performance, lighting quality and flexibility. All interiors are fully modular and easy to re-use in your projects. Collection contains 40 animation shots set in Unreal Engine Sequencer.



overview scene 02

archinteriors

2023

prepared only for **Unreal Engine**



Archinteriors for Unreal Engine vol. 11 consists of five interior scenes of modern office workspaces. Each scene is a complete interior and contains various zones that characterize modern work spaces. You can find here a co-working zones, relaxation areas and a meeting spots which, interpenetrating each other, create an attractive work environment. All scenes are lit with Lumen, delivering perfect balance between high performance, lighting quality and flexibility. All interiors are fully modular and easy to re-use in your projects. Collection contains 40 animation shots set in Unreal Engine Sequencer.



screenshot scene 03 cam 01

Software and models © 2023 EVERMOTION. EVERMOTION logo is trademark or registered trademark of Evermotion Inc. in the U.S. and/or other countries. All rights reserved. All *.uproject, *.uasset and bitmap models included on this collection with data are an integral part of „archinteriors vol.11 for Unreal Engine” and the resale of this data is strictly prohibited. All models can be used for commercial purposes only by owners who bought this collection. The sharing of collection is strictly prohibited unless that user has written authorization from EVERMOTION.

archinteriors

2023

prepared only for **Unreal Engine**



Archinteriors for Unreal Engine vol. 11 consists of five interior scenes of modern office workspaces. Each scene is a complete interior and contains various zones that characterize modern work spaces. You can find here a co-working zones, relaxation areas and a meeting spots which, interpenetrating each other, create an attractive work environment. All scenes are lit with Lumen, delivering perfect balance between high performance, lighting quality and flexibility. All interiors are fully modular and easy to re-use in your projects. Collection contains 40 animation shots set in Unreal Engine Sequencer.



screenshot scene 03 cam 02

Software and models © 2023 EVERMOTION. EVERMOTION logo is trademark or registered trademark of Evermotion Inc. in the U.S. and/or other countries. All rights reserved. All *.uproject, *.uasset and bitmaps models included on this collection with data are an integral part of „archinteriors vol.11 for Unreal Engine” and the resale of this data is strictly prohibited. All models can be used for commercial purposes only by owners who bought this collection. The sharing of collection is strictly prohibited unless that user has written authorization from EVERMOTION.

archinteriors

2023

prepared only for **Unreal Engine**



Archinteriors for Unreal Engine vol. 11 consists of five interior scenes of modern office workspaces. Each scene is a complete interior and contains various zones that characterize modern work spaces. You can find here a co-working zones, relaxation areas and a meeting spots which, interpenetrating each other, create an attractive work environment. All scenes are lit with Lumen, delivering perfect balance between high performance, lighting quality and flexibility. All interiors are fully modular and easy to re-use in your projects. Collection contains 40 animation shots set in Unreal Engine Sequencer.



screenshot scene 03 cam 03

Software and models © 2023 EVERMOTION. EVERMOTION logo is trademark or registered trademark of Evermotion Inc. in the U.S. and/or other countries. All rights reserved. All *.uproject, *.uasset and bitmaps models included on this collection with data are an integral part of „archinteriors vol.11 for Unreal Engine” and the resale of this data is strictly prohibited. All models can be used for commercial purposes only by owners who bought this collection. The sharing of collection is strictly prohibited unless that user has written authorization from EVERMOTION.

archinteriors

2023

prepared only for **Unreal Engine**



Archinteriors for Unreal Engine vol. 11 consists of five interior scenes of modern office workspaces. Each scene is a complete interior and contains various zones that characterize modern work spaces. You can find here a co-working zones, relaxation areas and a meeting spots which, interpenetrating each other, create an attractive work environment. All scenes are lit with Lumen, delivering perfect balance between high performance, lighting quality and flexibility. All interiors are fully modular and easy to re-use in your projects. Collection contains 40 animation shots set in Unreal Engine Sequencer.



screenshot scene 03 cam 04

Software and models © 2023 EVERMOTION. EVERMOTION logo is trademark or registered trademark of Evermotion Inc. in the U.S. and/or other countries. All rights reserved. All *.uproject, *.uasset and bitmap models included on this collection with data are an integral part of „archinteriors vol.11 for Unreal Engine” and the resale of this data is strictly prohibited. All models can be used for commercial purposes only by owners who bought this collection. The sharing of collection is strictly prohibited unless that user has written authorization from EVERMOTION.

archinteriors

2023

prepared only for **Unreal Engine**



Archinteriors for Unreal Engine vol. 11 consists of five interior scenes of modern office workspaces. Each scene is a complete interior and contains various zones that characterize modern work spaces. You can find here a co-working zones, relaxation areas and a meeting spots which, interpenetrating each other, create an attractive work environment. All scenes are lit with Lumen, delivering perfect balance between high performance, lighting quality and flexibility. All interiors are fully modular and easy to re-use in your projects. Collection contains 40 animation shots set in Unreal Engine Sequencer.



screenshot scene 03 cam 05

Software and models © 2023 EVERMOTION. EVERMOTION logo is trademark or registered trademark of Evermotion Inc. in the U.S. and/or other countries. All rights reserved. All *.uproject, *.uasset and bitmap models included on this collection with data are an integral part of „archinteriors vol.11 for Unreal Engine” and the resale of this data is strictly prohibited. All models can be used for commercial purposes only by owners who bought this collection. The sharing of collection is strictly prohibited unless that user has written authorization from EVERMOTION.

archinteriors

2023

prepared only for **Unreal Engine**



Archinteriors for Unreal Engine vol. 11 consists of five interior scenes of modern office workspaces. Each scene is a complete interior and contains various zones that characterize modern work spaces. You can find here a co-working zones, relaxation areas and a meeting spots which, interpenetrating each other, create an attractive work environment. All scenes are lit with Lumen, delivering perfect balance between high performance, lighting quality and flexibility. All interiors are fully modular and easy to re-use in your projects. Collection contains 40 animation shots set in Unreal Engine Sequencer.



screenshot scene 03 cam 06

Software and models © 2023 EVERMOTION. EVERMOTION logo is trademark or registered trademark of Evermotion Inc. in the U.S. and/or other countries. All rights reserved. All *.uproject, *.uasset and bitmaps models included on this collection with data are an integral part of „archinteriors vol.11 for Unreal Engine” and the resale of this data is strictly prohibited. All models can be used for commercial purposes only by owners who bought this collection. The sharing of collection is strictly prohibited unless that user has written authorization from EVERMOTION.

archinteriors

2023

prepared only for **Unreal Engine**



Archinteriors for Unreal Engine vol. 11 consists of five interior scenes of modern office workspaces. Each scene is a complete interior and contains various zones that characterize modern work spaces. You can find here a co-working zones, relaxation areas and a meeting spots which, interpenetrating each other, create an attractive work environment. All scenes are lit with Lumen, delivering perfect balance between high performance, lighting quality and flexibility. All interiors are fully modular and easy to re-use in your projects. Collection contains 40 animation shots set in Unreal Engine Sequencer.



screenshot scene 03 cam 07

Software and models © 2023 EVERMOTION. EVERMOTION logo is trademark or registered trademark of Evermotion Inc. in the U.S. and/or other countries. All rights reserved. All *.uproject, *.uasset and bitmap models included on this collection with data are an integral part of „archinteriors vol.11 for Unreal Engine” and the resale of this data is strictly prohibited. All models can be used for commercial purposes only by owners who bought this collection. The sharing of collection is strictly prohibited unless that user has written authorization from EVERMOTION.

archinteriors

2023

prepared only for **Unreal Engine**



Archinteriors for Unreal Engine vol. 11 consists of five interior scenes of modern office workspaces. Each scene is a complete interior and contains various zones that characterize modern work spaces. You can find here a co-working zones, relaxation areas and a meeting spots which, interpenetrating each other, create an attractive work environment. All scenes are lit with Lumen, delivering perfect balance between high performance, lighting quality and flexibility. All interiors are fully modular and easy to re-use in your projects. Collection contains 40 animation shots set in Unreal Engine Sequencer.



overview scene 03

Software and models © 2023 EVERMOTION. EVERMOTION logo is trademark or registered trademark of Evermotion Inc. in the U.S. and/or other countries. All rights reserved. All *.uproject, *.uasset and bitmaps models included on this collection with data are an integral part of „archinteriors vol.11 for Unreal Engine” and the resale of this data is strictly prohibited. All models can be used for commercial purposes only by owners who bought this collection. The sharing of collection is strictly prohibited unless that user has written authorization from EVERMOTION.

archinteriors

2023

prepared only for **Unreal Engine**



Archinteriors for Unreal Engine vol. 11 consists of five interior scenes of modern office workspaces. Each scene is a complete interior and contains various zones that characterize modern work spaces. You can find here a co-working zones, relaxation areas and a meeting spots which, interpenetrating each other, create an attractive work environment. All scenes are lit with Lumen, delivering perfect balance between high performance, lighting quality and flexibility. All interiors are fully modular and easy to re-use in your projects. Collection contains 40 animation shots set in Unreal Engine Sequencer.



screenshot scene 04 cam 01

Software and models © 2023 EVERMOTION. EVERMOTION logo is trademark or registered trademark of Evermotion Inc. in the U.S. and/or other countries. All rights reserved. All *.uproject, *.uasset and bitmap models included on this collection with data are an integral part of „archinteriors vol.11 for Unreal Engine” and the resale of this data is strictly prohibited. All models can be used for commercial purposes only by owners who bought this collection. The sharing of collection is strictly prohibited unless that user has written authorization from EVERMOTION.

archinteriors

2023

prepared only for **Unreal Engine**



Archinteriors for Unreal Engine vol. 11 consists of five interior scenes of modern office workspaces. Each scene is a complete interior and contains various zones that characterize modern work spaces. You can find here a co-working zones, relaxation areas and a meeting spots which, interpenetrating each other, create an attractive work environment. All scenes are lit with Lumen, delivering perfect balance between high performance, lighting quality and flexibility. All interiors are fully modular and easy to re-use in your projects. Collection contains 40 animation shots set in Unreal Engine Sequencer.



screenshot scene 04 cam 02

Software and models © 2023 EVERMOTION. EVERMOTION logo is trademark or registered trademark of Evermotion Inc. in the U.S. and/or other countries. All rights reserved. All *.uproject, *.uasset and bitmap models included on this collection with data are an integral part of „archinteriors vol.11 for Unreal Engine” and the resale of this data is strictly prohibited. All models can be used for commercial purposes only by owners who bought this collection. The sharing of collection is strictly prohibited unless that user has written authorization from EVERMOTION.

archinteriors

2023

prepared only for **Unreal Engine**



Archinteriors for Unreal Engine vol. 11 consists of five interior scenes of modern office workspaces. Each scene is a complete interior and contains various zones that characterize modern work spaces. You can find here a co-working zones, relaxation areas and a meeting spots which, interpenetrating each other, create an attractive work environment. All scenes are lit with Lumen, delivering perfect balance between high performance, lighting quality and flexibility. All interiors are fully modular and easy to re-use in your projects. Collection contains 40 animation shots set in Unreal Engine Sequencer.



screenshot scene 04 cam 03

Software and models © 2023 EVERMOTION. EVERMOTION logo is trademark or registered trademark of Evermotion Inc. in the U.S. and/or other countries. All rights reserved. All *.uproject, *.uasset and bitmaps models included on this collection with data are an integral part of „archinteriors vol.11 for Unreal Engine” and the resale of this data is strictly prohibited. All models can be used for commercial purposes only by owners who bought this collection. The sharing of collection is strictly prohibited unless that user has written authorization from EVERMOTION.

archinteriors

2023

prepared only for **Unreal Engine**



Archinteriors for Unreal Engine vol. 11 consists of five interior scenes of modern office workspaces. Each scene is a complete interior and contains various zones that characterize modern work spaces. You can find here a co-working zones, relaxation areas and a meeting spots which, interpenetrating each other, create an attractive work environment. All scenes are lit with Lumen, delivering perfect balance between high performance, lighting quality and flexibility. All interiors are fully modular and easy to re-use in your projects. Collection contains 40 animation shots set in Unreal Engine Sequencer.



screenshot scene 04 cam 04

Software and models © 2023 EVERMOTION. EVERMOTION logo is trademark or registered trademark of Evermotion Inc. in the U.S. and/or other countries. All rights reserved. All *.uproject, *.uasset and bitmap models included on this collection with data are an integral part of „archinteriors vol.11 for Unreal Engine” and the resale of this data is strictly prohibited. All models can be used for commercial purposes only by owners who bought this collection. The sharing of collection is strictly prohibited unless that user has written authorization from EVERMOTION.

archinteriors

2023

prepared only for **Unreal Engine**



Archinteriors for Unreal Engine vol. 11 consists of five interior scenes of modern office workspaces. Each scene is a complete interior and contains various zones that characterize modern work spaces. You can find here a co-working zones, relaxation areas and a meeting spots which, interpenetrating each other, create an attractive work environment. All scenes are lit with Lumen, delivering perfect balance between high performance, lighting quality and flexibility. All interiors are fully modular and easy to re-use in your projects. Collection contains 40 animation shots set in Unreal Engine Sequencer.



screenshot scene 04 cam 05

Software and models © 2023 EVERMOTION. EVERMOTION logo is trademark or registered trademark of Evermotion Inc. in the U.S. and/or other countries. All rights reserved. All *.uproject, *.uasset and bitmaps models included on this collection with data are an integral part of „archinteriors vol.11 for Unreal Engine” and the resale of this data is strictly prohibited. All models can be used for commercial purposes only by owners who bought this collection. The sharing of collection is strictly prohibited unless that user has written authorization from EVERMOTION.

archinteriors

2023

prepared only for **Unreal Engine**



Archinteriors for Unreal Engine vol. 11 consists of five interior scenes of modern office workspaces. Each scene is a complete interior and contains various zones that characterize modern work spaces. You can find here a co-working zones, relaxation areas and a meeting spots which, interpenetrating each other, create an attractive work environment. All scenes are lit with Lumen, delivering perfect balance between high performance, lighting quality and flexibility. All interiors are fully modular and easy to re-use in your projects. Collection contains 40 animation shots set in Unreal Engine Sequencer.



screenshot scene 04 cam 06

Software and models © 2023 EVERMOTION. EVERMOTION logo is trademark or registered trademark of Evermotion Inc. in the U.S. and/or other countries. All rights reserved. All *.uproject, *.uasset and bitmap models included on this collection with data are an integral part of „archinteriors vol.11 for Unreal Engine” and the resale of this data is strictly prohibited. All models can be used for commercial purposes only by owners who bought this collection. The sharing of collection is strictly prohibited unless that user has written authorization from EVERMOTION.

archinteriors

2023

prepared only for **Unreal Engine**



Archinteriors for Unreal Engine vol. 11 consists of five interior scenes of modern office workspaces. Each scene is a complete interior and contains various zones that characterize modern work spaces. You can find here a co-working zones, relaxation areas and a meeting spots which, interpenetrating each other, create an attractive work environment. All scenes are lit with Lumen, delivering perfect balance between high performance, lighting quality and flexibility. All interiors are fully modular and easy to re-use in your projects. Collection contains 40 animation shots set in Unreal Engine Sequencer.



screenshot scene 04 cam 07

archinteriors

2023

prepared only for **Unreal Engine**



Archinteriors for Unreal Engine vol. 11 consists of five interior scenes of modern office workspaces. Each scene is a complete interior and contains various zones that characterize modern work spaces. You can find here a co-working zones, relaxation areas and a meeting spots which, interpenetrating each other, create an attractive work environment. All scenes are lit with Lumen, delivering perfect balance between high performance, lighting quality and flexibility. All interiors are fully modular and easy to re-use in your projects. Collection contains 40 animation shots set in Unreal Engine Sequencer.



screenshot scene 04 cam 08

archinteriors

2023

prepared only for **Unreal Engine**



Archinteriors for Unreal Engine vol. 11 consists of five interior scenes of modern office workspaces. Each scene is a complete interior and contains various zones that characterize modern work spaces. You can find here a co-working zones, relaxation areas and a meeting spots which, interpenetrating each other, create an attractive work environment. All scenes are lit with Lumen, delivering perfect balance between high performance, lighting quality and flexibility. All interiors are fully modular and easy to re-use in your projects. Collection contains 40 animation shots set in Unreal Engine Sequencer.



screenshot scene 04 cam 09

Software and models © 2023 EVERMOTION. EVERMOTION logo is trademark or registered trademark of Evermotion Inc. in the U.S. and/or other countries. All rights reserved. All *.uproject, *.uasset and bitmaps models included on this collection with data are an integral part of „archinteriors vol.11 for Unreal Engine” and the resale of this data is strictly prohibited. All models can be used for commercial purposes only by owners who bought this collection. The sharing of collection is strictly prohibited unless that user has written authorization from EVERMOTION.

archinteriors

2023

prepared only for **Unreal Engine**



Archinteriors for Unreal Engine vol. 11 consists of five interior scenes of modern office workspaces. Each scene is a complete interior and contains various zones that characterize modern work spaces. You can find here a co-working zones, relaxation areas and a meeting spots which, interpenetrating each other, create an attractive work environment. All scenes are lit with Lumen, delivering perfect balance between high performance, lighting quality and flexibility. All interiors are fully modular and easy to re-use in your projects. Collection contains 40 animation shots set in Unreal Engine Sequencer.



screenshot scene 04 cam 10

Software and models © 2023 EVERMOTION. EVERMOTION logo is trademark or registered trademark of Evermotion Inc. in the U.S. and/or other countries. All rights reserved. All *.uproject, *.uasset and bitmap models included on this collection with data are an integral part of „archinteriors vol.11 for Unreal Engine” and the resale of this data is strictly prohibited. All models can be used for commercial purposes only by owners who bought this collection. The sharing of collection is strictly prohibited unless that user has written authorization from EVERMOTION.

archinteriors

2023

prepared only for **Unreal Engine**



Archinteriors for Unreal Engine vol. 11 consists of five interior scenes of modern office workspaces. Each scene is a complete interior and contains various zones that characterize modern work spaces. You can find here a co-working zones, relaxation areas and a meeting spots which, interpenetrating each other, create an attractive work environment. All scenes are lit with Lumen, delivering perfect balance between high performance, lighting quality and flexibility. All interiors are fully modular and easy to re-use in your projects. Collection contains 40 animation shots set in Unreal Engine Sequencer.



screenshot scene 04 cam 11

Software and models © 2023 EVERMOTION. EVERMOTION logo is trademark or registered trademark of Evermotion Inc. in the U.S. and/or other countries. All rights reserved. All *.uproject, *.uasset and bitmaps models included on this collection with data are an integral part of „archinteriors vol.11 for Unreal Engine” and the resale of this data is strictly prohibited. All models can be used for commercial purposes only by owners who bought this collection. The sharing of collection is strictly prohibited unless that user has written authorization from EVERMOTION.

archinteriors

2023

prepared only for **Unreal Engine**



Archinteriors for Unreal Engine vol. 11 consists of five interior scenes of modern office workspaces. Each scene is a complete interior and contains various zones that characterize modern work spaces. You can find here a co-working zones, relaxation areas and a meeting spots which, interpenetrating each other, create an attractive work environment. All scenes are lit with Lumen, delivering perfect balance between high performance, lighting quality and flexibility. All interiors are fully modular and easy to re-use in your projects. Collection contains 40 animation shots set in Unreal Engine Sequencer.



screenshot scene 04 cam 12

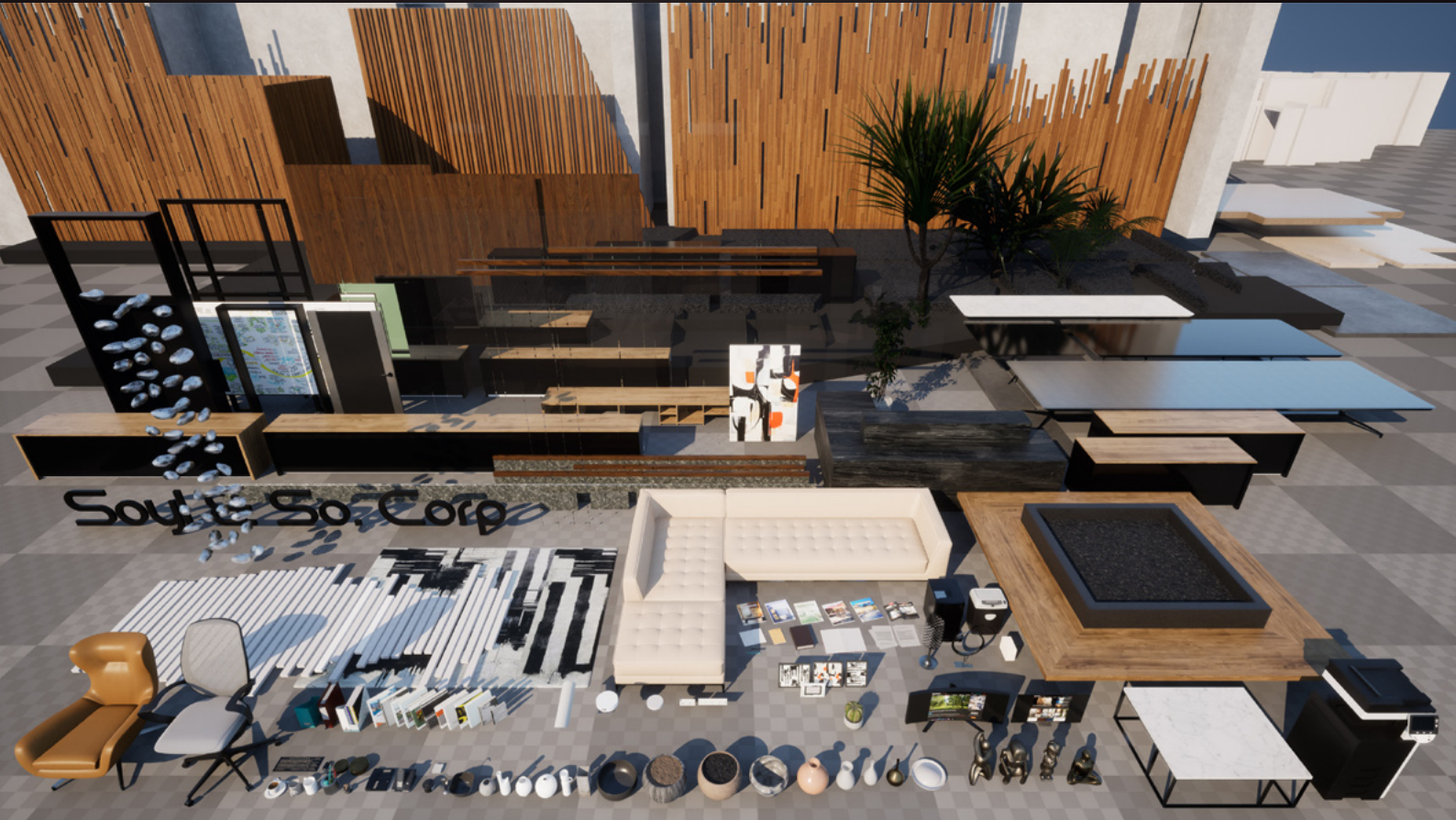
archinteriors

2023

prepared only for **Unreal Engine**



Archinteriors for Unreal Engine vol. 11 consists of five interior scenes of modern office workspaces. Each scene is a complete interior and contains various zones that characterize modern work spaces. You can find here a co-working zones, relaxation areas and a meeting spots which, interpenetrating each other, create an attractive work environment. All scenes are lit with Lumen, delivering perfect balance between high performance, lighting quality and flexibility. All interiors are fully modular and easy to re-use in your projects. Collection contains 40 animation shots set in Unreal Engine Sequencer.



overview scene 04

Software and models © 2023 EVERMOTION. EVERMOTION logo is trademark or registered trademark of Evermotion Inc. in the U.S. and/or other countries. All rights reserved. All *.uproject, *.uasset and bitmaps models included on this collection with data are an integral part of „archinteriors vol.11 for Unreal Engine” and the resale of this data is strictly prohibited. All models can be used for commercial purposes only by owners who bought this collection. The sharing of collection is strictly prohibited unless that user has written authorization from EVERMOTION.

archinteriors

2023

prepared only for **Unreal Engine**



Archinteriors for Unreal Engine vol. 11 consists of five interior scenes of modern office workspaces. Each scene is a complete interior and contains various zones that characterize modern work spaces. You can find here a co-working zones, relaxation areas and a meeting spots which, interpenetrating each other, create an attractive work environment. All scenes are lit with Lumen, delivering perfect balance between high performance, lighting quality and flexibility. All interiors are fully modular and easy to re-use in your projects. Collection contains 40 animation shots set in Unreal Engine Sequencer.



screenshot scene 05 cam 01

Software and models © 2023 EVERMOTION. EVERMOTION logo is trademark or registered trademark of Evermotion Inc. in the U.S. and/or other countries. All rights reserved. All *.uproject, *.uasset and bitmaps models included on this collection with data are an integral part of „archinteriors vol.11 for Unreal Engine” and the resale of this data is strictly prohibited. All models can be used for commercial purposes only by owners who bought this collection. The sharing of collection is strictly prohibited unless that user has written authorization from EVERMOTION.

archinteriors

2023

prepared only for **Unreal Engine**



Archinteriors for Unreal Engine vol. 11 consists of five interior scenes of modern office workspaces. Each scene is a complete interior and contains various zones that characterize modern work spaces. You can find here a co-working zones, relaxation areas and a meeting spots which, interpenetrating each other, create an attractive work environment. All scenes are lit with Lumen, delivering perfect balance between high performance, lighting quality and flexibility. All interiors are fully modular and easy to re-use in your projects. Collection contains 40 animation shots set in Unreal Engine Sequencer.



screenshot scene 05 cam 02

Software and models © 2023 EVERMOTION. EVERMOTION logo is trademark or registered trademark of Evermotion Inc. in the U.S. and/or other countries. All rights reserved. All *.uproject, *.uasset and bitmap models included on this collection with data are an integral part of „archinteriors vol.11 for Unreal Engine” and the resale of this data is strictly prohibited. All models can be used for commercial purposes only by owners who bought this collection. The sharing of collection is strictly prohibited unless that user has written authorization from EVERMOTION.

archinteriors

2023

prepared only for **Unreal Engine**



Archinteriors for Unreal Engine vol. 11 consists of five interior scenes of modern office workspaces. Each scene is a complete interior and contains various zones that characterize modern work spaces. You can find here a co-working zones, relaxation areas and a meeting spots which, interpenetrating each other, create an attractive work environment. All scenes are lit with Lumen, delivering perfect balance between high performance, lighting quality and flexibility. All interiors are fully modular and easy to re-use in your projects. Collection contains 40 animation shots set in Unreal Engine Sequencer.



screenshot scene 05 cam 03

Software and models © 2023 EVERMOTION. EVERMOTION logo is trademark or registered trademark of Evermotion Inc. in the U.S. and/or other countries. All rights reserved. All *.uproject, *.uasset and bitmaps models included on this collection with data are an integral part of „archinteriors vol.11 for Unreal Engine” and the resale of this data is strictly prohibited. All models can be used for commercial purposes only by owners who bought this collection. The sharing of collection is strictly prohibited unless that user has written authorization from EVERMOTION.

archinteriors

2023

prepared only for **Unreal Engine**



Archinteriors for Unreal Engine vol. 11 consists of five interior scenes of modern office workspaces. Each scene is a complete interior and contains various zones that characterize modern work spaces. You can find here a co-working zones, relaxation areas and a meeting spots which, interpenetrating each other, create an attractive work environment. All scenes are lit with Lumen, delivering perfect balance between high performance, lighting quality and flexibility. All interiors are fully modular and easy to re-use in your projects. Collection contains 40 animation shots set in Unreal Engine Sequencer.



screenshot scene 05 cam 04

Software and models © 2023 EVERMOTION. EVERMOTION logo is trademark or registered trademark of Evermotion Inc. in the U.S. and/or other countries. All rights reserved. All *.uproject, *.uasset and bitmap models included on this collection with data are an integral part of „archinteriors vol.11 for Unreal Engine” and the resale of this data is strictly prohibited. All models can be used for commercial purposes only by owners who bought this collection. The sharing of collection is strictly prohibited unless that user has written authorization from EVERMOTION.

archinteriors

2023

prepared only for **Unreal Engine**



Archinteriors for Unreal Engine vol. 11 consists of five interior scenes of modern office workspaces. Each scene is a complete interior and contains various zones that characterize modern work spaces. You can find here a co-working zones, relaxation areas and a meeting spots which, interpenetrating each other, create an attractive work environment. All scenes are lit with Lumen, delivering perfect balance between high performance, lighting quality and flexibility. All interiors are fully modular and easy to re-use in your projects. Collection contains 40 animation shots set in Unreal Engine Sequencer.



screenshot scene 05 cam 05

Software and models © 2023 EVERMOTION. EVERMOTION logo is trademark or registered trademark of Evermotion Inc. in the U.S. and/or other countries. All rights reserved. All *.uproject, *.uasset and bitmaps models included on this collection with data are an integral part of „archinteriors vol.11 for Unreal Engine” and the resale of this data is strictly prohibited. All models can be used for commercial purposes only by owners who bought this collection. The sharing of collection is strictly prohibited unless that user has written authorization from EVERMOTION.

archinteriors

2023

prepared only for **Unreal Engine**



Archinteriors for Unreal Engine vol. 11 consists of five interior scenes of modern office workspaces. Each scene is a complete interior and contains various zones that characterize modern work spaces. You can find here a co-working zones, relaxation areas and a meeting spots which, interpenetrating each other, create an attractive work environment. All scenes are lit with Lumen, delivering perfect balance between high performance, lighting quality and flexibility. All interiors are fully modular and easy to re-use in your projects. Collection contains 40 animation shots set in Unreal Engine Sequencer.



screenshot scene 05 cam 06

Software and models © 2023 EVERMOTION. EVERMOTION logo is trademark or registered trademark of Evermotion Inc. in the U.S. and/or other countries. All rights reserved. All *.uproject, *.uasset and bitmaps models included on this collection with data are an integral part of „archinteriors vol.11 for Unreal Engine” and the resale of this data is strictly prohibited. All models can be used for commercial purposes only by owners who bought this collection. The sharing of collection is strictly prohibited unless that user has written authorization from EVERMOTION.

archinteriors

2023

prepared only for **Unreal Engine**



Archinteriors for Unreal Engine vol. 11 consists of five interior scenes of modern office workspaces. Each scene is a complete interior and contains various zones that characterize modern work spaces. You can find here a co-working zones, relaxation areas and a meeting spots which, interpenetrating each other, create an attractive work environment. All scenes are lit with Lumen, delivering perfect balance between high performance, lighting quality and flexibility. All interiors are fully modular and easy to re-use in your projects. Collection contains 40 animation shots set in Unreal Engine Sequencer.



screenshot scene 05 cam 07

Software and models © 2023 EVERMOTION. EVERMOTION logo is trademark or registered trademark of Evermotion Inc. in the U.S. and/or other countries. All rights reserved. All *.uproject, *.uasset and bitmaps models included on this collection with data are an integral part of „archinteriors vol.11 for Unreal Engine” and the resale of this data is strictly prohibited. All models can be used for commercial purposes only by owners who bought this collection. The sharing of collection is strictly prohibited unless that user has written authorization from EVERMOTION.

archinteriors

2023

prepared only for **Unreal Engine**



Archinteriors for Unreal Engine vol. 11 consists of five interior scenes of modern office workspaces. Each scene is a complete interior and contains various zones that characterize modern work spaces. You can find here a co-working zones, relaxation areas and a meeting spots which, interpenetrating each other, create an attractive work environment. All scenes are lit with Lumen, delivering perfect balance between high performance, lighting quality and flexibility. All interiors are fully modular and easy to re-use in your projects. Collection contains 40 animation shots set in Unreal Engine Sequencer.



screenshot scene 05 cam 08

Software and models © 2023 EVERMOTION. EVERMOTION logo is trademark or registered trademark of Evermotion Inc. in the U.S. and/or other countries. All rights reserved. All *.uproject, *.uasset and bitmap models included on this collection with data are an integral part of „archinteriors vol.11 for Unreal Engine” and the resale of this data is strictly prohibited. All models can be used for commercial purposes only by owners who bought this collection. The sharing of collection is strictly prohibited unless that user has written authorization from EVERMOTION.

archinteriors

2023

prepared only for **Unreal Engine**



Archinteriors for Unreal Engine vol. 11 consists of five interior scenes of modern office workspaces. Each scene is a complete interior and contains various zones that characterize modern work spaces. You can find here a co-working zones, relaxation areas and a meeting spots which, interpenetrating each other, create an attractive work environment. All scenes are lit with Lumen, delivering perfect balance between high performance, lighting quality and flexibility. All interiors are fully modular and easy to re-use in your projects. Collection contains 40 animation shots set in Unreal Engine Sequencer.



screenshot scene 05 cam 09

Software and models © 2023 EVERMOTION. EVERMOTION logo is trademark or registered trademark of Evermotion Inc. in the U.S. and/or other countries. All rights reserved. All *.uproject, *.uasset and bitmap models included on this collection with data are an integral part of „archinteriors vol.11 for Unreal Engine” and the resale of this data is strictly prohibited. All models can be used for commercial purposes only by owners who bought this collection. The sharing of collection is strictly prohibited unless that user has written authorization from EVERMOTION.

archinteriors

2023

prepared only for **Unreal Engine**



Archinteriors for Unreal Engine vol. 11 consists of five interior scenes of modern office workspaces. Each scene is a complete interior and contains various zones that characterize modern work spaces. You can find here a co-working zones, relaxation areas and a meeting spots which, interpenetrating each other, create an attractive work environment. All scenes are lit with Lumen, delivering perfect balance between high performance, lighting quality and flexibility. All interiors are fully modular and easy to re-use in your projects. Collection contains 40 animation shots set in Unreal Engine Sequencer.



screenshot scene 05 cam 10

Software and models © 2023 EVERMOTION. EVERMOTION logo is trademark or registered trademark of Evermotion Inc. in the U.S. and/or other countries. All rights reserved. All *.uproject, *.uasset and bitmaps models included on this collection with data are an integral part of „archinteriors vol.11 for Unreal Engine” and the resale of this data is strictly prohibited. All models can be used for commercial purposes only by owners who bought this collection. The sharing of collection is strictly prohibited unless that user has written authorization from EVERMOTION.

archinteriors

2023

prepared only for **Unreal Engine**



Archinteriors for Unreal Engine vol. 11 consists of five interior scenes of modern office workspaces. Each scene is a complete interior and contains various zones that characterize modern work spaces. You can find here a co-working zones, relaxation areas and a meeting spots which, interpenetrating each other, create an attractive work environment. All scenes are lit with Lumen, delivering perfect balance between high performance, lighting quality and flexibility. All interiors are fully modular and easy to re-use in your projects. Collection contains 40 animation shots set in Unreal Engine Sequencer.



overview scene 05