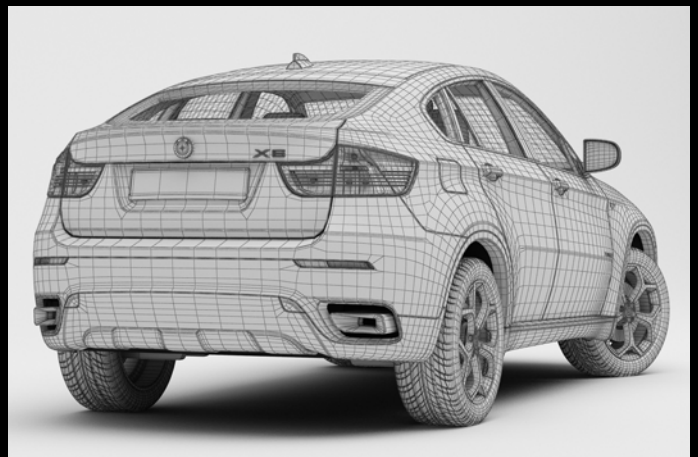




MODEL 01

BMW X6







MODEL 02

MAZDA 6



EVERMOTION
WWW.EVERMOTION.ORG

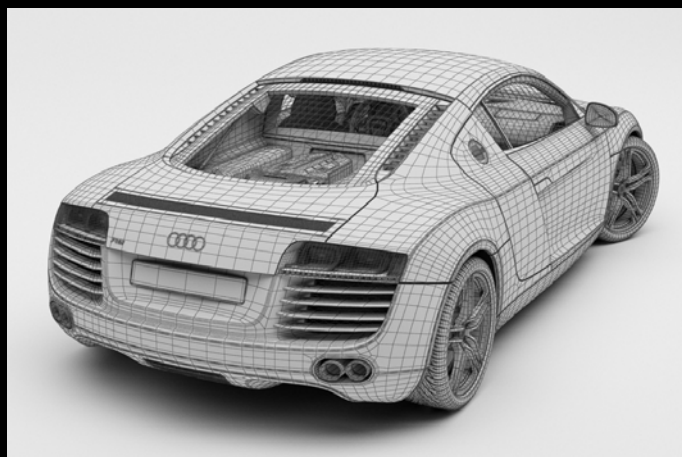
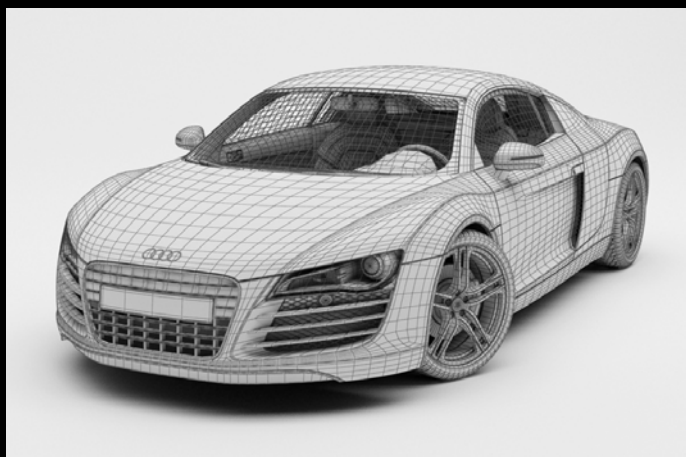
Software and models © 2009 EVERMOTION. EVERMOTION, the EVERMOTION logo, HDMODELS, and the HDMODELS logo are trademarks or registered trademarks of Evermotion Inc. in the U.S. and/or other countries. All rights reserved. All *.max, *.3ds, *.obj, *.fbx and *.dxf models included on this DVDROM with data are an integral part of "HDmodels cars volume 3" and the resale of this data is strictly prohibited. All models can be used for commercial purposes only by owners who bought this DVDROM. The sharing of DVDROM data is strictly prohibited unless that user has written authorization from EVERMOTION.





MODEL 03

AUDI R8



EVERMOTION
WWW.EVERMOTION.ORG

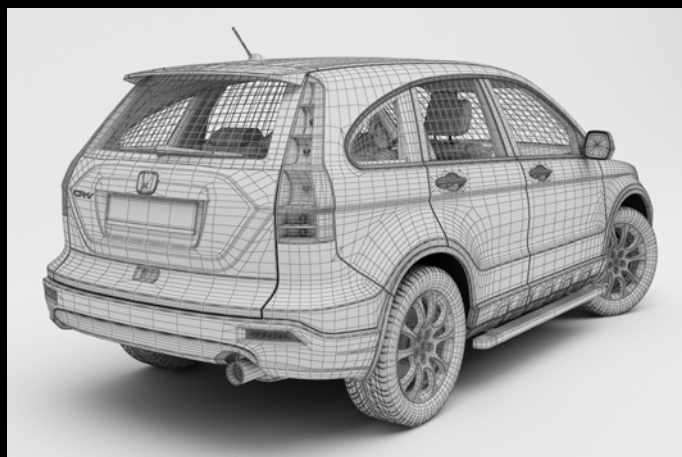
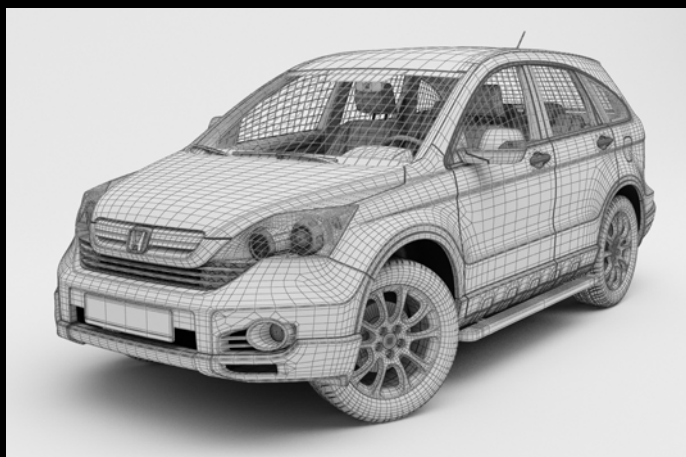
Software and models © 2009 EVERMOTION. EVERMOTION, the EVERMOTION logo, HDMODELS, and the HDMODELS logo are trademarks or registered trademarks of Evermotion Inc. in the U.S. and/or other countries. All rights reserved. All *.max, *.3ds, *.obj, *.fbx and *.dxf models included on this DVDROM with data are an integral part of "HDmodels cars volume 3" and the resale of this data is strictly prohibited. All models can be used for commercial purposes only by owners who bought this DVDROM. The sharing of DVDROM data is strictly prohibited unless that user has written authorization from EVERMOTION.





MODEL 04

HONDA CR-V



EVERMOTION
WWW.EVERMOTION.ORG

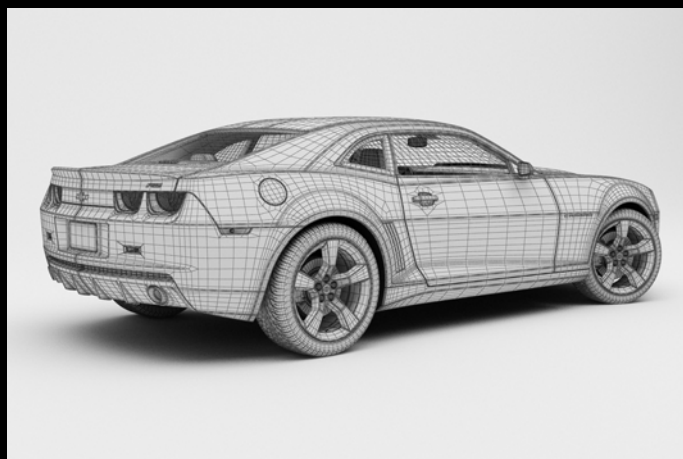
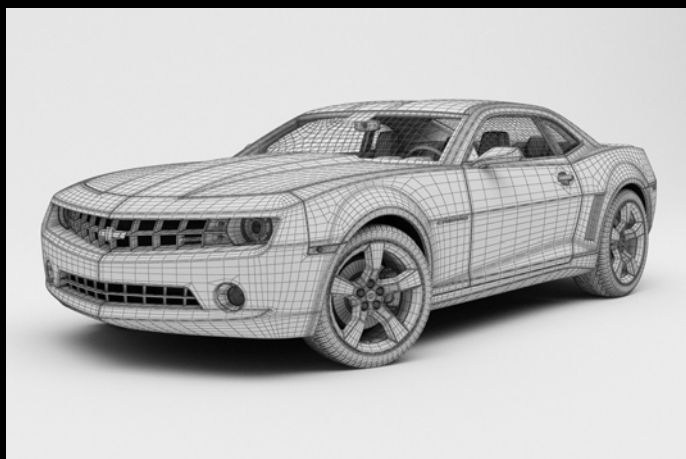
Software and models © 2009 EVERMOTION. EVERMOTION, the EVERMOTION logo, HDMODELS, and the HDMODELS logo are trademarks or registered trademarks of Evermotion Inc. in the U.S. and/or other countries. All rights reserved. All *.max, *.3ds, *.obj, *.fbx and *.dxf models included on this DVDROM with data are an integral part of "HDmodels cars volume 3" and the resale of this data is strictly prohibited. All models can be used for commercial purposes only by owners who bought this DVDROM. The sharing of DVDROM data is strictly prohibited unless that user has written authorization from EVERMOTION.





MODEL 05

CHEVROLET CAMARO



EVERMOTION
WWW.EVERMOTION.ORG

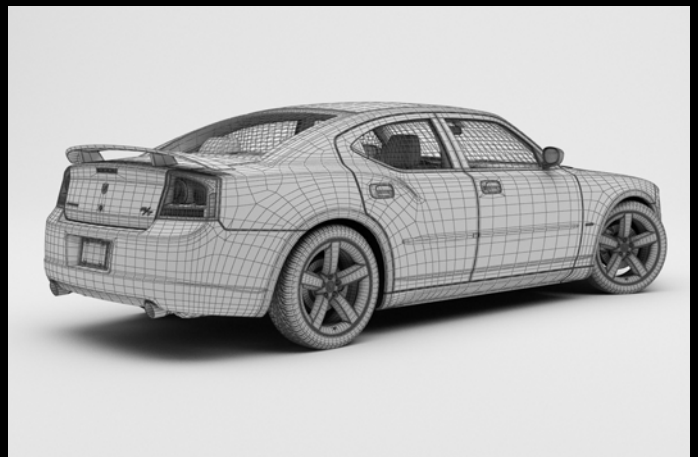
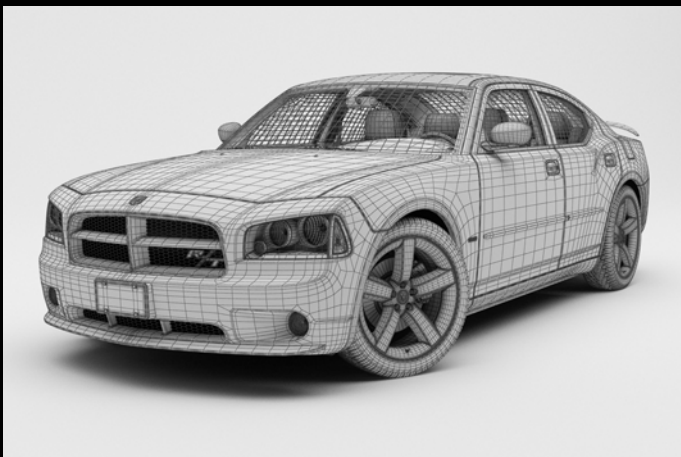
Software and models © 2009 EVERMOTION. EVERMOTION, the EVERMOTION logo, HDMODELS, and the HDMODELS logo are trademarks or registered trademarks of Evermotion Inc. in the U.S. and/or other countries. All rights reserved. All *.max, *.3ds, *.obj, *.fbx and *.dxf models included on this DVDROM with data are an integral part of "HDmodelsCars volume 3" and the resale of this data is strictly prohibited. All models can be used for commercial purposes only by owners who bought this DVDROM. The sharing of DVDROM data is strictly prohibited unless that user has written authorization from EVERMOTION.





MODEL 06

DODGE CHARGER



EVERMOTION
WWW.EVERMOTION.ORG

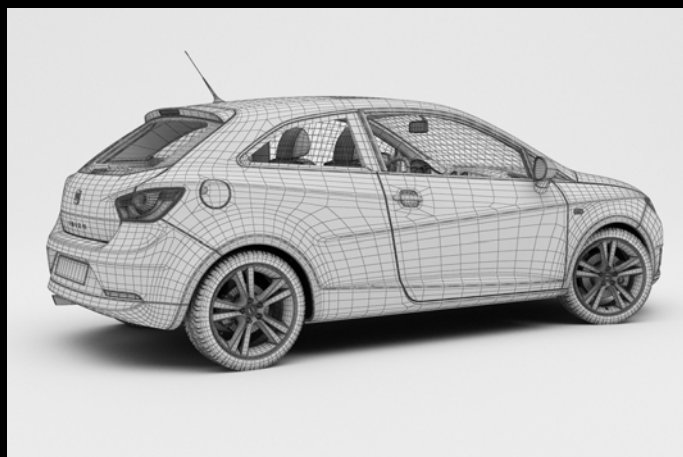
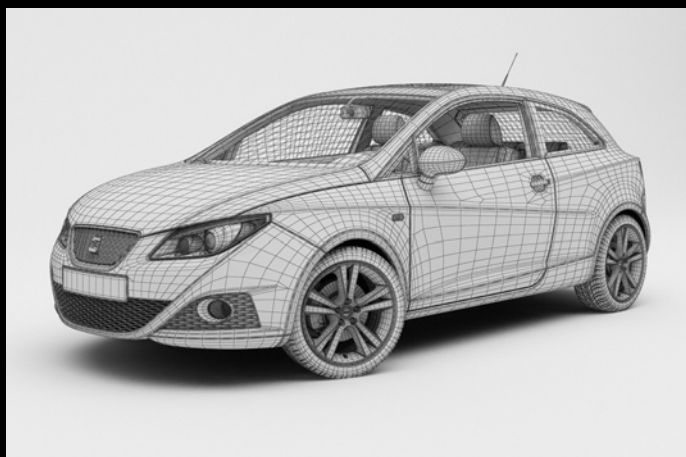
Software and models © 2009 EVERMOTION. EVERMOTION, the EVERMOTION logo, HDMODELS, and the HDMODELS logo are trademarks or registered trademarks of Evermotion Inc. in the U.S. and/or other countries. All rights reserved. All *.max, *.3ds, *.obj, *.fbx and *.dxf models included on this DVDROM with data are an integral part of "HDmodels cars volume 3" and the resale of this data is strictly prohibited. All models can be used for commercial purposes only by owners who bought this DVDROM. The sharing of DVDROM data is strictly prohibited unless that user has written authorization from EVERMOTION.





MODEL 07

SEAT IBIZA



EVERMOTION
WWW.EVERMOTION.ORG

Software and models © 2009 EVERMOTION. EVERMOTION, the EVERMOTION logo, HDMODELS, and the HDMODELS logo are trademarks or registered trademarks of Evermotion Inc. in the U.S. and/or other countries. All rights reserved. All *.max, *.3ds, *.obj, *.fbx and *.dxf models included on this DVDROM with data are an integral part of "HDModelscars volume 3" and the resale of this data is strictly prohibited. All models can be used for commercial purposes only by owners who bought this DVDROM. The sharing of DVDROM data is strictly prohibited unless that user has written authorization from EVERMOTION.





MODEL 08

VOLKSWAGEN SCIROCCO

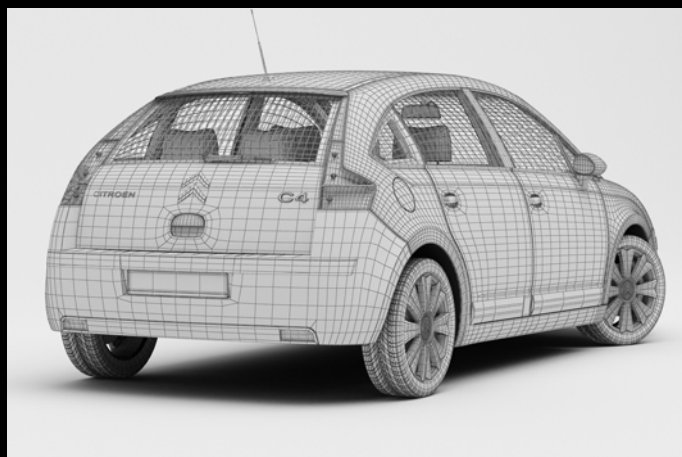






MODEL 09

CITROËN C4



EVERMOTION
WWW.EVERMOTION.ORG

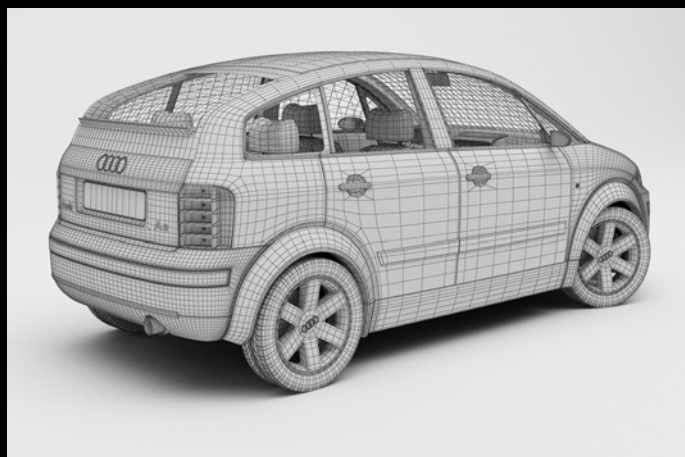
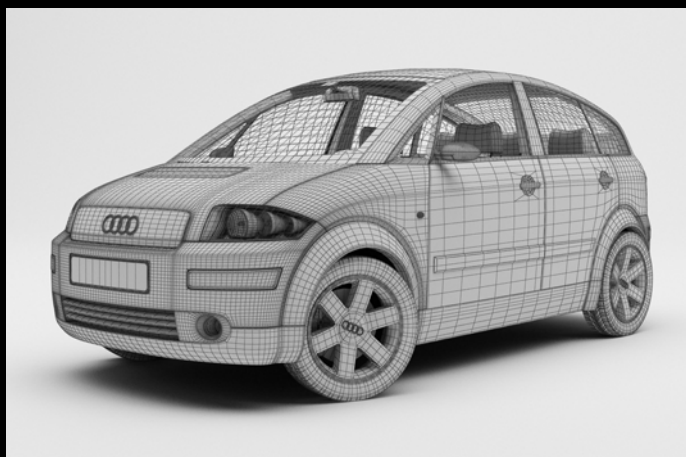
Software and models © 2009 EVERMOTION. EVERMOTION, the EVERMOTION logo, HDMODELS, and the HDMODELS logo are trademarks or registered trademarks of Evermotion Inc. in the U.S. and/or other countries. All rights reserved. All *.max, *.3ds, *.obj, *.fbx and *.dxf models included on this DVDROM with data are an integral part of "HDmodels cars volume 3" and the resale of this data is strictly prohibited. All models can be used for commercial purposes only by owners who bought this DVDROM. The sharing of DVDROM data is strictly prohibited unless that user has written authorization from EVERMOTION.





MODEL 10

AUDI A2



EVERMOTION
WWW.EVERMOTION.ORG

Software and models © 2009 EVERMOTION. EVERMOTION, the EVERMOTION logo, HDMODELS, and the HDMODELS logo are trademarks or registered trademarks of Evermotion Inc. in the U.S. and/or other countries. All rights reserved. All *.max, *.3ds, *.obj, *.fbx and *.dxf models included on this DVDROM with data are an integral part of "HDModscars volume 3" and the resale of this data is strictly prohibited. All models can be used for commercial purposes only by owners who bought this DVDROM. The sharing of DVDROM data is strictly prohibited unless that user has written authorization from EVERMOTION.

